

Extent of Brent River Park Phase 1AN

KEY

Cair Roll
Pre-established 300mm diameter rolls manufactured by Salix or similar and approved. Standard Mix -

| | |
|----------------------|-----|
| Carex acutiformis | 20% |
| Juncus effusus | 20% |
| Lythrum salicaria | 20% |
| Iris pseudacorus | 20% |
| Phalaris arundinacea | 20% |

Lower Marginal/Aquatic Mix B - 1L @ 8/m²

| | |
|----------------------|-----|
| Batium umbellatus | 12% |
| Carex riparia | 16% |
| Eleocharis palustris | 12% |
| Iris pseudacorus | 16% |
| Glyceria maxima | 12% |
| Juncus articulatus | 16% |
| Phragmites australis | 16% |

Upper Marginal Mix A - 1L @ 8/m²

| | |
|---------------------|-----|
| Angelica sylvestris | 10% |
| Cardamine pratensis | 10% |
| Carex pendula | 10% |
| Filipendula ulmaria | 10% |
| Epilobium hirsutum | 10% |
| Glyceria declinata | 10% |
| Juncus articulatus | 10% |
| Lychnis flos cuculi | 10% |
| Lythrum salicaria | 10% |
| Veronica catenata | 10% |

Terrestrial Mix C
1L@8/m² in groups of 15 by species

| | |
|-----------------------|-----|
| Bidens cernua | 10% |
| Cardamine pratensis | 10% |
| Deschampsia cespitosa | 10% |
| Dipsacus fullonum | 10% |
| Filipendula ulmaria | 10% |
| Juncus effusus | 05% |
| Juncus inflexus | 05% |
| Lotus pendunculatus | 10% |
| Lychnis flos cuculi | 10% |
| Lysimachia vulgaris | 10% |
| Scirpus sylvaticus | 10% |

Path Mix - 1L @ 8/m²

| | |
|-----------------------|-----|
| Arrhenatherum elatius | 10% |
| Cardamine pratensis | 10% |
| Carex pendula | 20% |
| Deschampsia cespitosa | 20% |
| Lychnis flos-cuculi | 10% |
| Dipsacus fullonum | 10% |
| Scirpus sylvaticus | 20% |

Proposed Trees/Shrubs

General Purpose Meadow Mix
Emorsgate Wildflower Meadow Mix EM2 sown at a rate of 4g/m² or similar and approved.

| | |
|-----------------------|-----|
| Wildflowers | % |
| Achillea millefolium | 0.5 |
| Centaurea nigra | 2 |
| Daucus carota | 0.5 |
| Galium verum | 1.5 |
| Knautia arvensis | 2 |
| Leucanthemum vulgare | 2 |
| Lotus corniculatus | 2 |
| Plantago lanceolata | 2 |
| Primula veris | 1.5 |
| Prunella vulgaris | 0.4 |
| Ranunculus acris | 3 |
| Rhinanthus minor | 1.5 |
| Rumex acetosa | 1 |
| Trifolium pratense | 0.1 |
| Grasses | |
| Agrostis capillaris | 8 |
| Cynosurus cristatus | 40 |
| Festuca rubra | 28 |
| Phleum bertolonii | 4 |
| Alopecurus pratensis | 5 |
| Anthoxanthum odoratum | 1 |
| Briza media | 1 |
| Cynosurus cristatus | 36 |
| Deschampsia cespitosa | 1 |
| Festuca rubra | 24 |

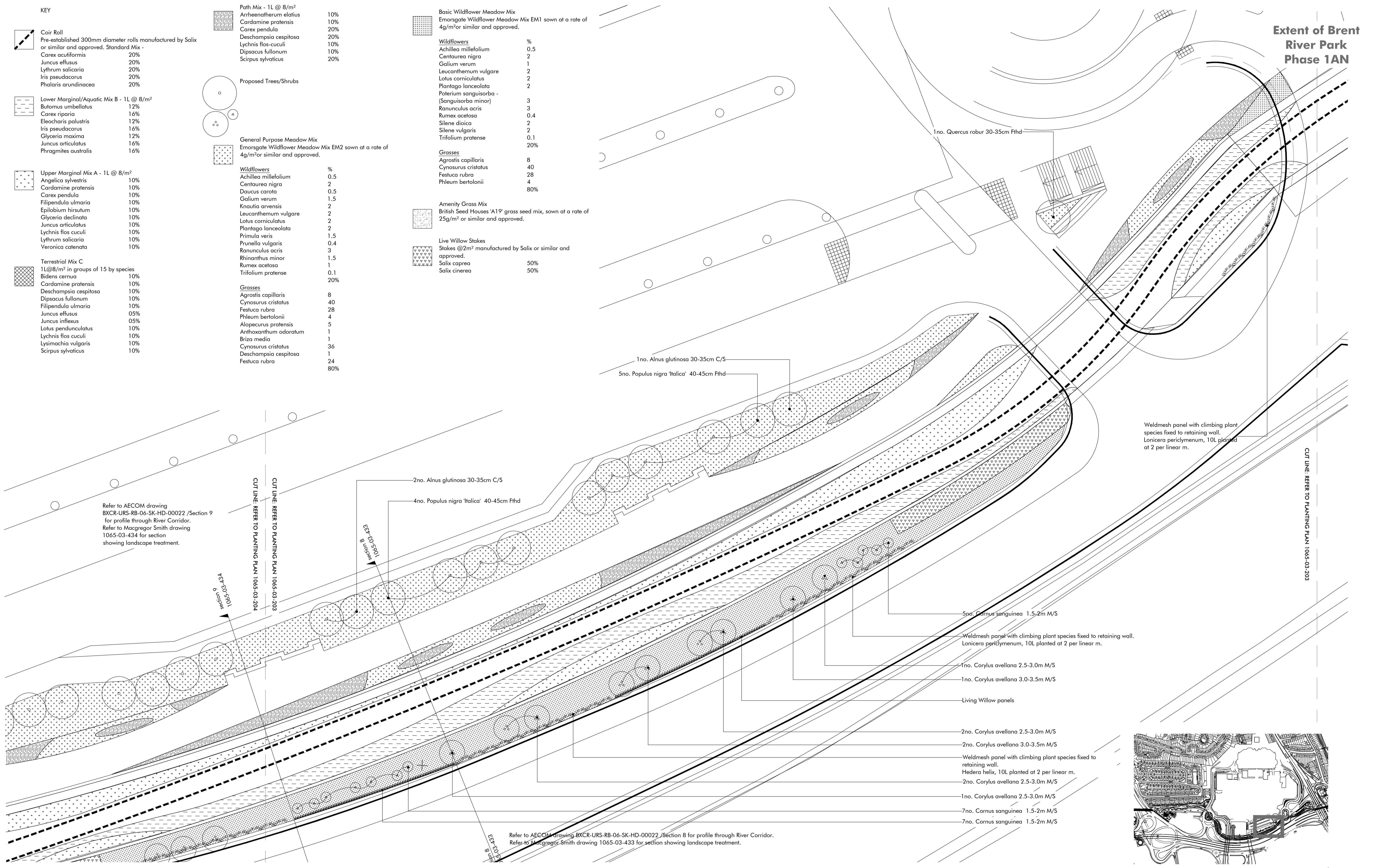
Basic Wildflower Meadow Mix
Emorsgate Wildflower Meadow Mix EM1 sown at a rate of 4g/m² or similar and approved.

| | |
|--|-----|
| Wildflowers | % |
| Achillea millefolium | 0.5 |
| Centaurea nigra | 2 |
| Galium verum | 1 |
| Leucanthemum vulgare | 2 |
| Lotus corniculatus | 2 |
| Plantago lanceolata | 2 |
| Poterium sanguisorba - (Sanguisorba minor) | 3 |
| Ranunculus acris | 3 |
| Rumex acetosa | 0.4 |
| Silene dioica | 2 |
| Silene vulgaris | 2 |
| Trifolium pratense | 0.1 |
| Grasses | |
| Agrostis capillaris | 8 |
| Cynosurus cristatus | 40 |
| Festuca rubra | 28 |
| Phleum bertolonii | 4 |

Amenity Grass Mix
British Seed Houses 'A19' grass seed mix, sown at a rate of 25g/m² or similar and approved.

Live Willow Stakes
Stakes @2m² manufactured by Salix or similar and approved.

| | |
|---------------|-----|
| Salix caprea | 50% |
| Salix cinerea | 50% |



Refer to AECOM drawing BXCR-URS-RB-06-SK-HD-00022 /Section 9 for profile through River Corridor. Refer to Macgregor Smith drawing 1065-03-434 for section showing landscape treatment.

4x 437-00-05010
8 units

CUT LINE REFER TO PLANTING PLAN 1065-03-203
CUT LINE REFER TO PLANTING PLAN 1065-03-204

2no. Alnus glutinosa 30-35cm C/S
437-00-001
8 units

4no. Populus nigra 'Italica' 40-45cm Fhhd

Refer to AECOM drawing BXCR-URS-RB-06-SK-HD-00022 /Section 8 for profile through River Corridor. Refer to Macgregor Smith drawing 1065-03-433 for section showing landscape treatment.

Weldmesh panel with climbing plant species fixed to retaining wall. Lonicera periclymenum, 10L planted at 2 per linear m.

5pa. Cornus sanguinea 1.5-2m M/S

Weldmesh panel with climbing plant species fixed to retaining wall. Lonicera periclymenum, 10L planted at 2 per linear m.

1no. Corylus avellana 2.5-3.0m M/S

1no. Corylus avellana 3.0-3.5m M/S

Living Willow panels

2no. Corylus avellana 2.5-3.0m M/S

2no. Corylus avellana 3.0-3.5m M/S

Weldmesh panel with climbing plant species fixed to retaining wall. Hedera helix, 10L planted at 2 per linear m.

2no. Corylus avellana 2.5-3.0m M/S

1no. Corylus avellana 2.5-3.0m M/S

7no. Cornus sanguinea 1.5-2m M/S

7no. Cornus sanguinea 1.5-2m M/S

| Revision | Description | Drawn by | Checked by | Date |
|----------|--------------------------|----------|------------|----------|
| - | 1st issue | JR | IG | 07.11.14 |
| A | Phase 1AN RMA Submission | JR | IG | 14.11.14 |
| B | Phase 1AN RMA Submission | RH | JR | 28.11.14 |
| C | Updated River Corridor | JR | GJ | 18.05.15 |
| D | Phase 1AN RMA Submission | JR | GJ | 26.05.15 |

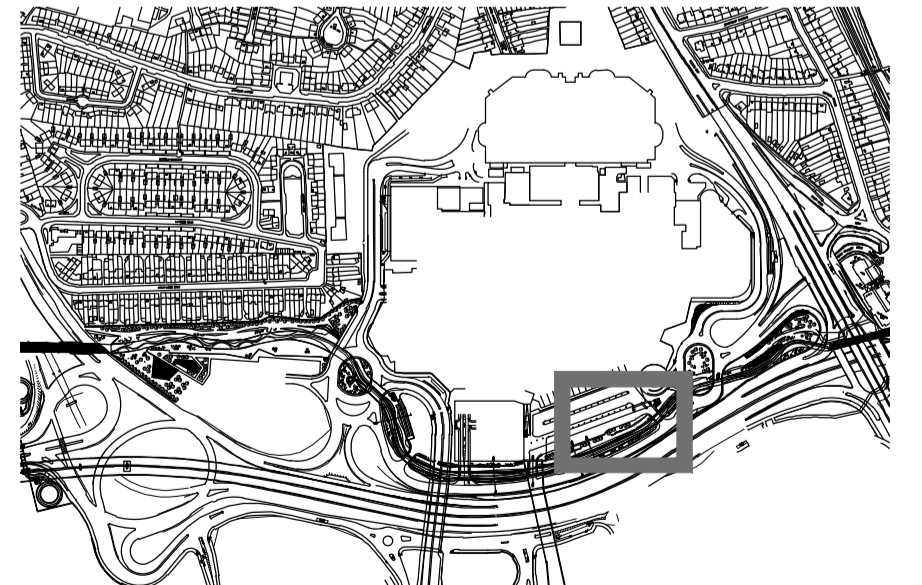
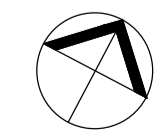
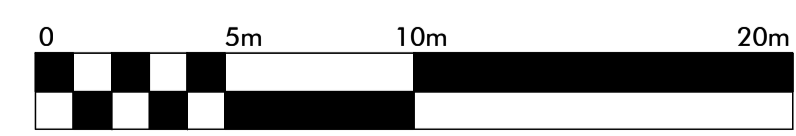
NOTE

A To be read in conjunction with Macgregor Smith Base, Soft and Hardworks Specifications

B For sections refer to drawings 1065-03-433 to 1065-03-438

Xrefs

ARCH - CT - SK-937-rev_01_Masterplan 3C Outline
ENG - AECOM - BXCR-URS-RB-06-SK-HD-00021_P01-4_Bound
ENG - AECOM - BXCR-URS-ZZ-HW-M2-CE-00002_P24
ENG - URS - BXCR-URS-ZZ-HW-M2-CE-00004_P05



Macgregor • Smith
Landscape Architecture

| | | | |
|------------|--|------------|----------|
| project | Brent Cross Cricklewood | drawn by | JR |
| status | Phase 1AN RMA Submission | checked by | IG |
| title | Brent River Park Reach 2 Planting Plan - 03/09 | date | 29.10.14 |
| | | scale | 1/200@A1 |
| drawing No | 1065-03-203 | revision | D |