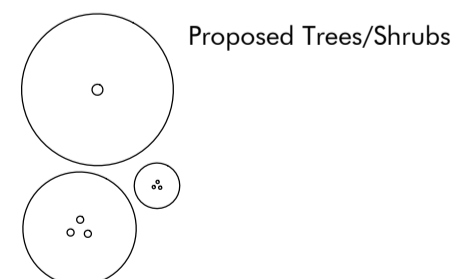


KEY

- Cair Roll  
Pre-established 300mm diameter rolls manufactured by Salix or similar and approved. Standard Mix -  
Carex acutiformis 20%  
Juncus effusus 20%  
Lythrum salicaria 20%  
Iris pseudacorus 20%  
Phalaris arundinacea 20%
- Lower Marginal/Aquatic Mix B - 1L @ 8/m<sup>2</sup>  
Butomus umbellatus 12%  
Carex riparia 16%  
Eleocharis palustris 12%  
Iris pseudacorus 16%  
Glyceria maxima 12%  
Juncus articulatus 16%  
Phragmites australis 16%
- Upper Marginal Mix A - 1L @ 8/m<sup>2</sup>  
Angelica sylvestris 10%  
Cardamine pratensis 10%  
Carex pendula 10%  
Filipendula ulmaria 10%  
Epilobium hirsutum 10%  
Glyceria declinata 10%  
Juncus articulatus 10%  
Lychnis flos cuculi 10%  
Lythrum salicaria 10%  
Veronica catenata 10%

- Terrestrial Mix C  
1L@8/m<sup>2</sup> in groups of 15 by species  
Bidens cernua 10%  
Cardamine pratensis 10%  
Deschampsia cespitosa 10%  
Dipsacus fullonum 10%  
Filipendula ulmaria 10%  
Juncus effusus 05%  
Juncus inflexus 05%  
Lotus pendunculatus 10%  
Lychnis flos cuculi 10%  
Lysimachia vulgaris 10%  
Scirpus sylvaticus 10%

- Path Mix - 1L @ 8/m<sup>2</sup>  
Arrhenatherum elatius 10%  
Cardamine pratensis 10%  
Carex pendula 20%  
Deschampsia cespitosa 20%  
Lychnis flos-cuculi 10%  
Dipsacus fullonum 10%  
Scirpus sylvaticus 20%



General Purpose Meadow Mix  
Emorsgate Wildflower Meadow Mix EM2 sown at a rate of 4g/m<sup>2</sup> or similar and approved.

Wildflowers	%
Achillea millefolium	0.5
Centaurea nigra	2
Daucus carota	0.5
Galium verum	1.5
Knautia arvensis	2
Leucanthemum vulgare	2
Lotus corniculatus	2
Plantago lanceolata	2
Poterium sanguisorba - (Sanguisorba minor)	3
Ranunculus acris	3
Rumex acetosa	0.4
Ranunculus acris	3
Rhinanthus minor	1.5
Rumex acetosa	1
Trifolium pratense	0.1
Grasses	20%
Agrostis capillaris	8
Cynosurus cristatus	40
Festuca rubra	28
Phleum bertolonii	4
Alopecurus pratensis	5
Anthoxanthum odoratum	1
Briza media	1
Cynosurus cristatus	36
Deschampsia cespitosa	1
Festuca rubra	24
	80%

Basic Wildflower Meadow Mix  
Emorsgate Wildflower Meadow Mix EM1 sown at a rate of 4g/m<sup>2</sup> or similar and approved.

Wildflowers	%
Achillea millefolium	0.5
Centaurea nigra	2
Galium verum	1
Leucanthemum vulgare	2
Lotus corniculatus	2
Plantago lanceolata	2
Poterium sanguisorba - (Sanguisorba minor)	3
Ranunculus acris	3
Rumex acetosa	0.4
Silene dioica	2
Silene vulgaris	2
Trifolium pratense	0.1
Grasses	20%
Agrostis capillaris	8
Cynosurus cristatus	40
Festuca rubra	28
Phleum bertolonii	4
	80%

Amenity Grass Mix  
British Seed Houses 'A19' grass seed mix, sown at a rate of 25g/m<sup>2</sup> or similar and approved.

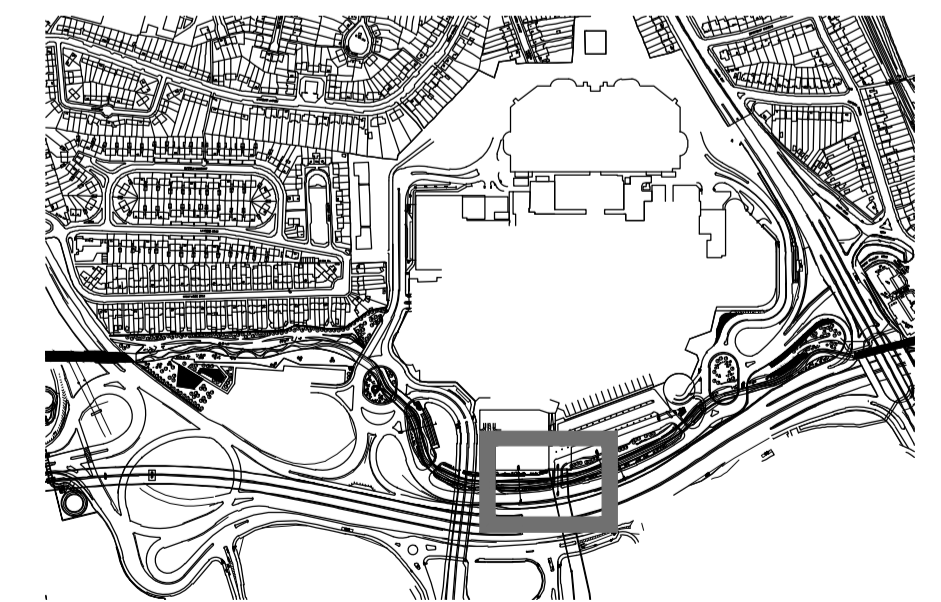
- Live Willow Stakes  
Stakes @2m<sup>2</sup> manufactured by Salix or similar and approved.  
Salix caprea 50%  
Salix cinerea 50%

NOTE

- A To be read in conjunction with Macgregor Smith Base, Soft and Hardworks Specifications
- B For sections refer to drawings 1065-03-433 to 1065-03-438

Xrefs

- ARCH - CT - SK-937-rev\_01\_Masterplan 3C Outline
- ENG - AECOM - BXCR-URS-RB-06-M2-HD-00001
- ENG - AECOM - BXCR-URS-RB-06-M2-HD-00002
- ENG - AECOM - BXCR-URS-RB-06-M2-HD-00003
- ENG - AECOM - BXCR-URS-ZZ-HW-M2-CE-00002\_P24
- ENG - AECOM - BXCR-URS-ZZ-HW-M2-CE-00004



Macgregor • Smith  
Landscape Architecture

project	Brent Cross Cricklewood	drawn by	JR
status	Phase 1AN RMA Submission	checked by	IG
title	Brent River Park Reach 2 Planting Plan - 04/09	date	29.10.14
		scale	1/200@A1
drawing No	1065-03-204	revision	D

