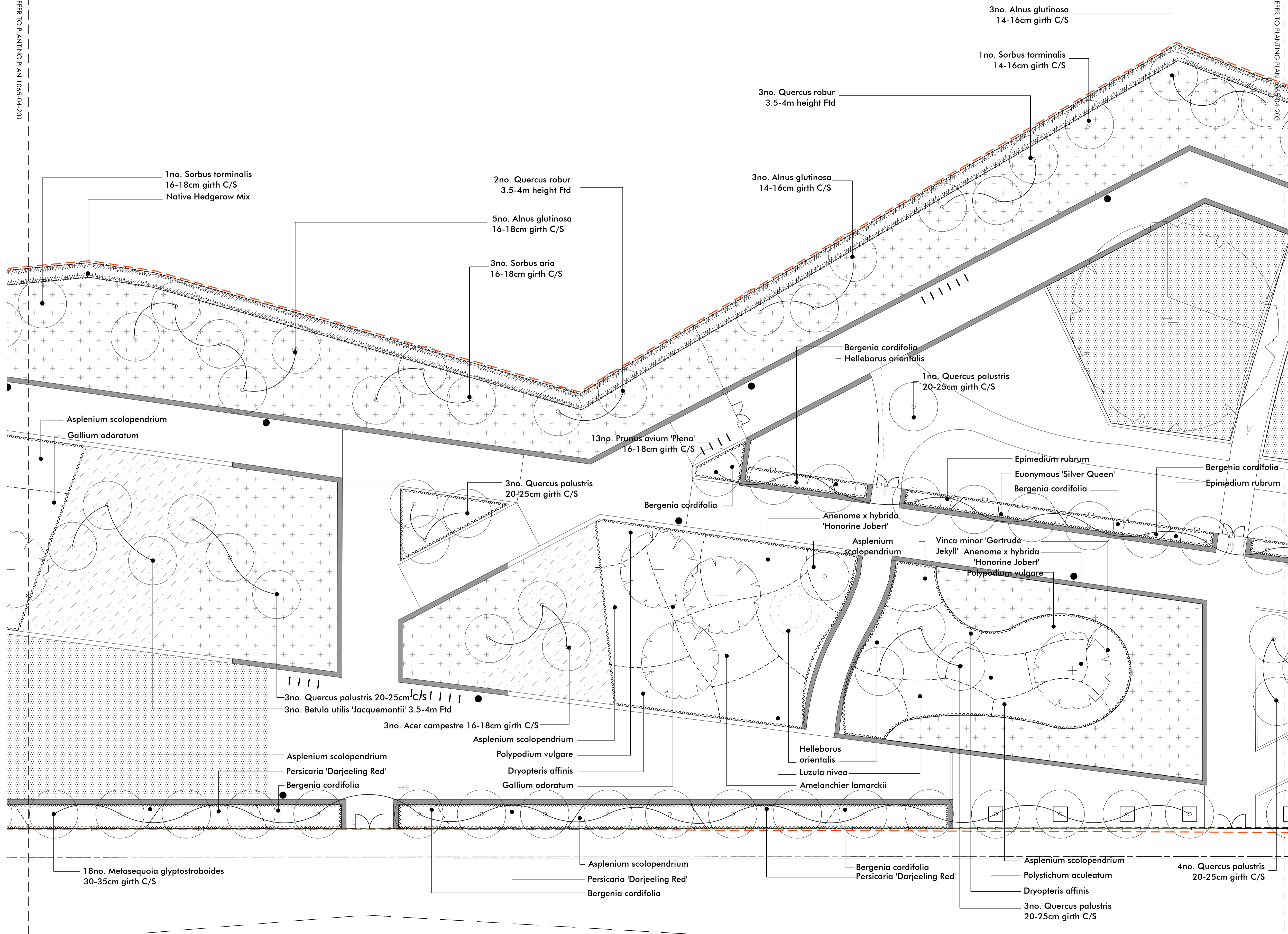


CUT LINE: REFER TO PLANTING PLAN 1065-04-201

CUT LINE: REFER TO PLANTING PLAN 1065-04-203



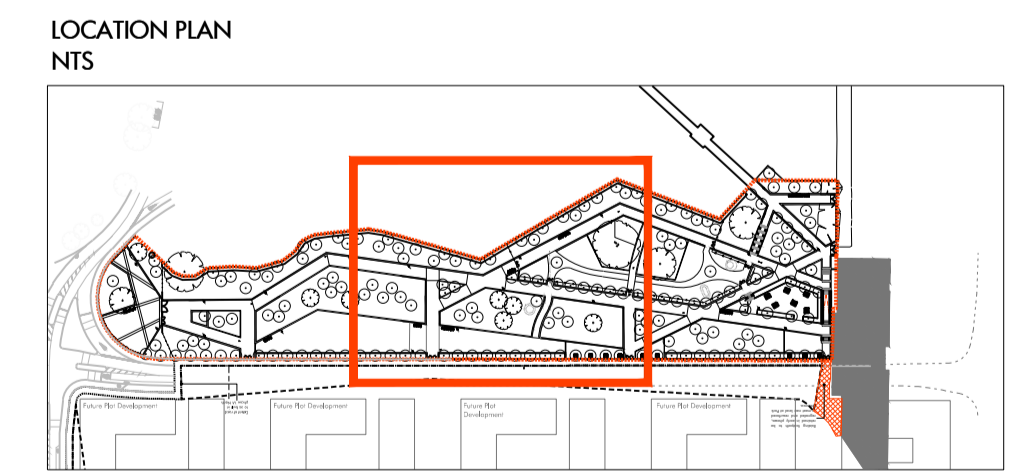
KEY

- SITE BOUNDARY
- EXISTING TREE RETAINED
- PROPOSED TREE
- ORNAMENTAL SHRUB AND HERBACEOUS PLANTING
- WOODLAND WILDFLOWER MEADOW MIX
Seed mix EW1 supplied by Emorsgate or equal and approved.
- DAMP GRASSLAND MEADOW MIX
Emorsgate EMB or similar approved.
- AMENITY GRASS
British Seed Houses
Amenity Seed Mix A19
- PROPOSED NATIVE HEDGEROW

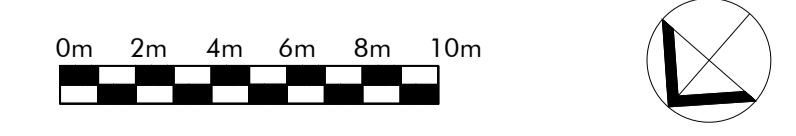
Transplants, planted in a double staggered row @ 500mm centres, and fitted with individual rabbit guards.

15%no.	Carpinus betulus	90/100Ht
15%no.	Cornus sanguinea	90/100Ht
10%no.	Coryllus avellana	90/100Ht
30%no.	Crateagus monogyna	60/75Ht
10%no.	Ilex aquifolium	3L pot
10%no.	Ligustrum vulgare	60/75Ht
10%no.	Viburnum opulus	60/75Ht

- NOTES**
- Refer to Tree Retention and Removal drawing 1065-04-12 for information on existing trees to be retained.
 - For Hard Landscape Elements, Refer to General Arrangement Plans. 1065-04-003, 1065-04-004
 - Refer to levels drawing 1065-04-021 for site levels.
 - All drawings to be read in conjunction with detail drawings and soft and base landscape specifications.
 - Refer to the soft landscape specification for top soil and subsoil depths.
 - Refer to Claremont Park Design Development Report for pot sizes and densities



Revision	Description	Drawn by	Checked by	Date
-	Phase 1AN RMA Submission	GJ	CvS	14.11.2014
A	Minor Amendments for Phase 1AN RMA	WH	JP	not issued yet
B	Minor amendments to plant species to ensure tolerance of damp conditions where levels have been lowered to provide on-site water attenuation.	ET	JP	19.01.15
C	Issued Phase 1AN RMA Submission	AP	JP	15.05.15



Macgregor • Smith
Landscape Architecture

project	Brent Cross Cricklewood Claremont Park	drawn by	CvS
status	Phase 1AN RMA Submission	checked by	GJ
title	Planting Plan 2	date	28.07.14
Xref	-	scale	1:200@A1
drawing No	1065-04-202	revision	C

This drawing is protected by copyright. Contractors must check all dimensions on site. Only figure dimensions are to be worked from. Discrepancies must be reported to architect before proceeding.
Christophers House, 11-12 High Street, Bath, BA1 5AG. Tel:01225 464 490 Fax:01225 429 962 enquiries@macgregorsmith.co.uk