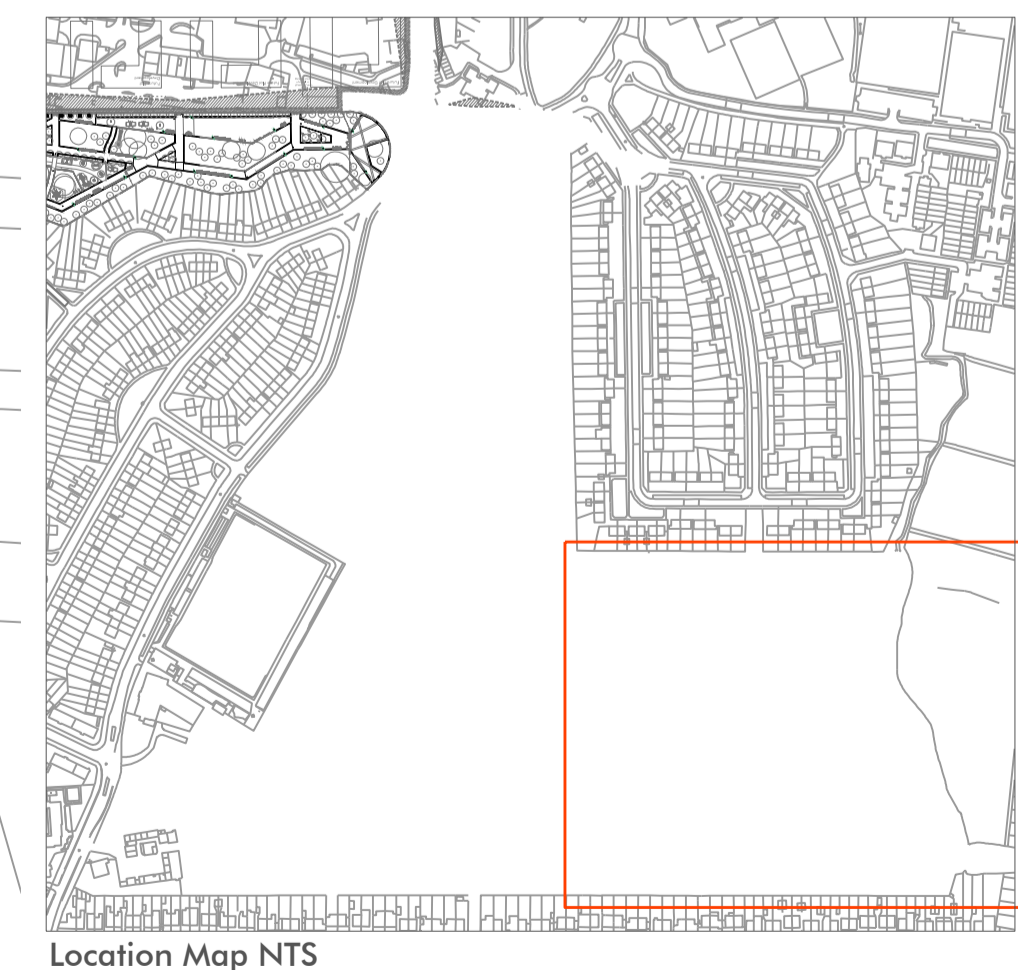




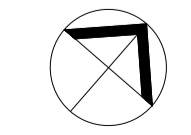
KEY:		SURFACE MATERIALS	
	Existing Trees Retained		Play Area Surfaces Artificial Grass, Refer to 1065-08-424
	Proposed Trees		Play Area Surfaces Sand
	Existing Vegetation Retained		Play Area Surfaces Wetpour Safety Surface, Refer to 1065-08-419
	Rain Garden Planting		Consolidated Gravel Refer to 1065-08-420
	Ornamental Planting		MUGA Porous Surfacing Refer to 1065-08-421
	Hedge Planting		Resin Bound Gravel and Flush Concrete Banding Refer to 1065-08-422
	Amenity Grass Areas		Coloured Hot Rolled Asphalt Refer to 1065-08-423
	Grass Sports Pitches		Vehicular Grade Macadam
	Damp Grassland Areas		Improved Macadam for Underpass
	Wildflower meadow areas	<b>STREET FURNITURE</b>	
	Hedgerow seed mix		Cycle Stands, Galvanised steel Sheffield Style stands, Refer to 1065-08-425
	Marginal planting		Bollards, Galvanised metal bollards, Refer to 1065-08-426 & 1065-08-427
	Pre-seeded coir rolls		Picnic Bench, Timber and galvanised steel 8 seater bench, Refer to 1065-08-430
<b>FENCES AND BOUNDARIES</b>			Seating Type 1 Timber top bench, Refer to 1065-08-433
	Existing Fence Retained		Seating Type 2 Double sided platform bench with arm rest and back rest, Refer to 1065-08-434
	Fencing Type 1 3m high weldmesh to MUGA.		Seating Type 3 Timber bench with arm rest and back rest, Taylor made RN6 or similar.
	Fencing Type 2 1.8m high vertical bar fence to boundary.		Seating Type 4 Individual seats, Refer to 1065-08-435
	Fencing Type 3 1.1 high bow top fence to play areas and car park.		Seating Type 5 Perch and seat bench with arm rest and back rest, Refer to 1065-08-436
	Fencing Type 4 1.1 high fence between Wildlife Area and sports field edge.		Seating Type 6 Concrete bench, Refer to 1065-08-431
	Fencing Type 5 Timber Knee Rail.		Seating Type 7 Timber 'Sunlounger' style bench, Refer to 1065-08-443
	Gate Type 1 Single and double leaf weldmesh gates to MUGA.		Seating Type 8 Planters to Central Square, Refer to 1065-08-437
	Gate Type 2 Bespoke lockable swing entrance gates to main entrances with concrete side walls.		Litter Bins Trevor Isles or similar.
	Gate Type 3 Single and double leaf self closing Rospa Approved bow top gates to play areas.		Signage - Monolith Information Signs Refer to Design Development Report for detail.
	Motorcycle Barriers/ Maintenance Vehicle Gateway		Signage - Minilith Information Signs Refer to Design Development Report for detail.
			Signage - Directional Finger Posts Refer to Design Development Report for detail.
			Dog Spending Area



Revision	Description	Drawn by	Checked by	Date
-	Phase 1AN RMA Submission	CvS	IG	07.11.14
A	Phase 1AN RMA Submission	CvS	GJ	14.11.14
B	Minor Amendments for Phase 1AN RMA	WH	JP	28.11.14
C	Phase 1AN RMA Submission	AP	JP	29.01.15
D	Revised in accordance with LBB comments. 25.02.15	AP	JP	26.02.15
E	Phase 1AN RMA Submission	AP	JP	13.05.15
F	Minor Amendments for Phase 1AN RMA	AP	JP	11.06.15

**NOTES:**

- To be read in conjunction with Macgregor Smith Base, Soft and Hardworks Specifications
- To be read in conjunction with: Planting Plans 1065-08-201-215, Detail Plans 1065-08-401-437, CPF Design Development Report and Tree Retention Plans 1065-08-050-054.
- Refer to drawing 1065-08-001 for level information.
- Feature Paving to be high quality P/C Block paving detail to coordinate with adjacent paving surfaces, park gateways and/or Living Bridge Southern Approach. To be detailed in conjunction with Infrastructure Surface details at the next stage.



project	Brent Cross Cricklewood Clitterhouse Playing Fields	drawn by	WH
status	Phase 1AN RMA Submission	checked by	GJ
title	General Arrangement 6	date	13.08.14
Xref	1065-08-000 & 001	scale	1:500@A1
drawing No	1065-08-025	revision	<b>F</b>

Macgregor • Smith  
Landscape Architecture

This drawing is protected by copyright. Contractors must check all dimensions on site. Only figure dimensions are to be worked from. Discrepancies must be reported to architect before proceeding. Christopher House, 11-12 High Street, Bath, BA1 5AQ. Tel: 01225 464 090. e-mail: enquiries@macgregorsmith.co.uk