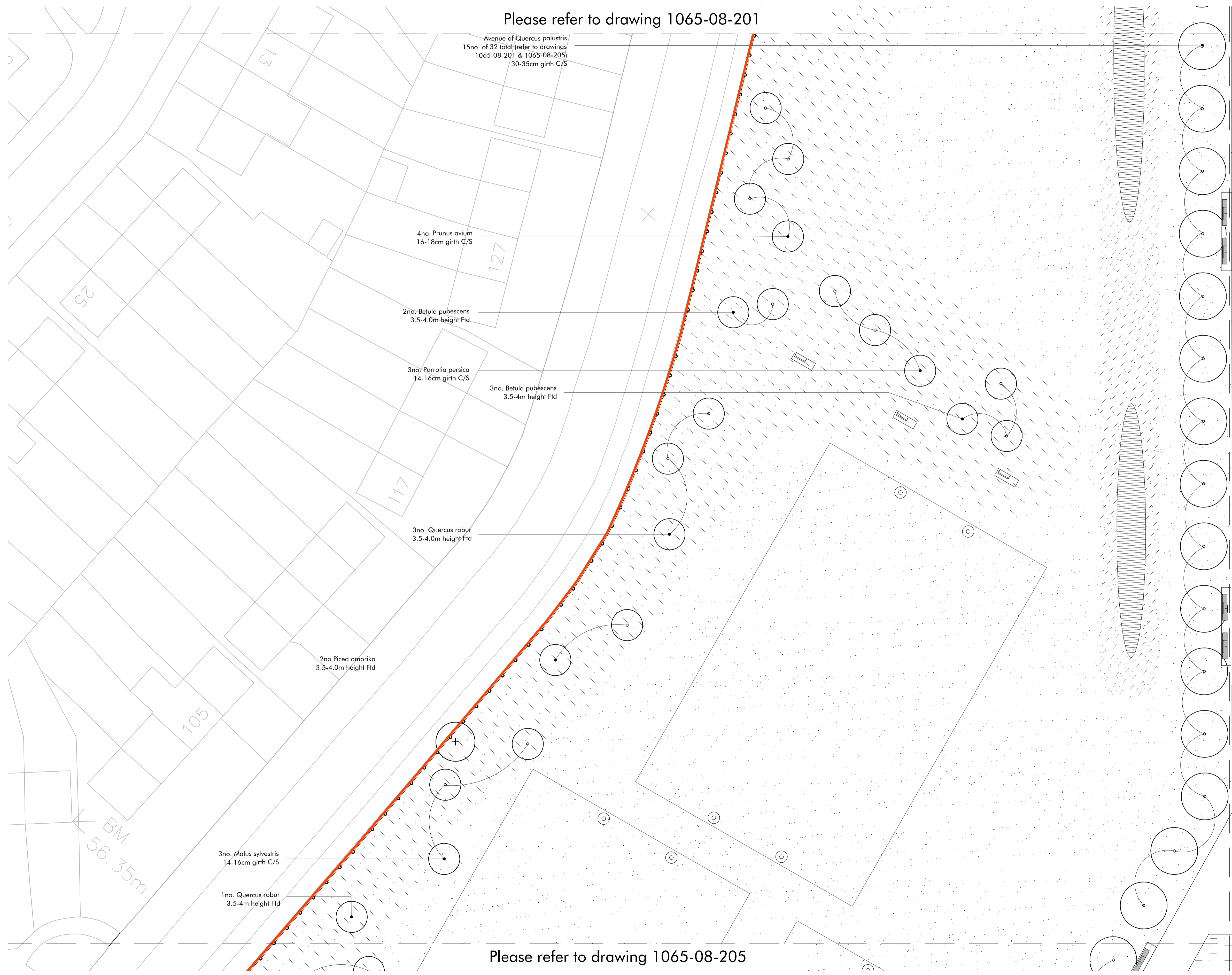


Please refer to drawing 1065-08-201



**KEY**

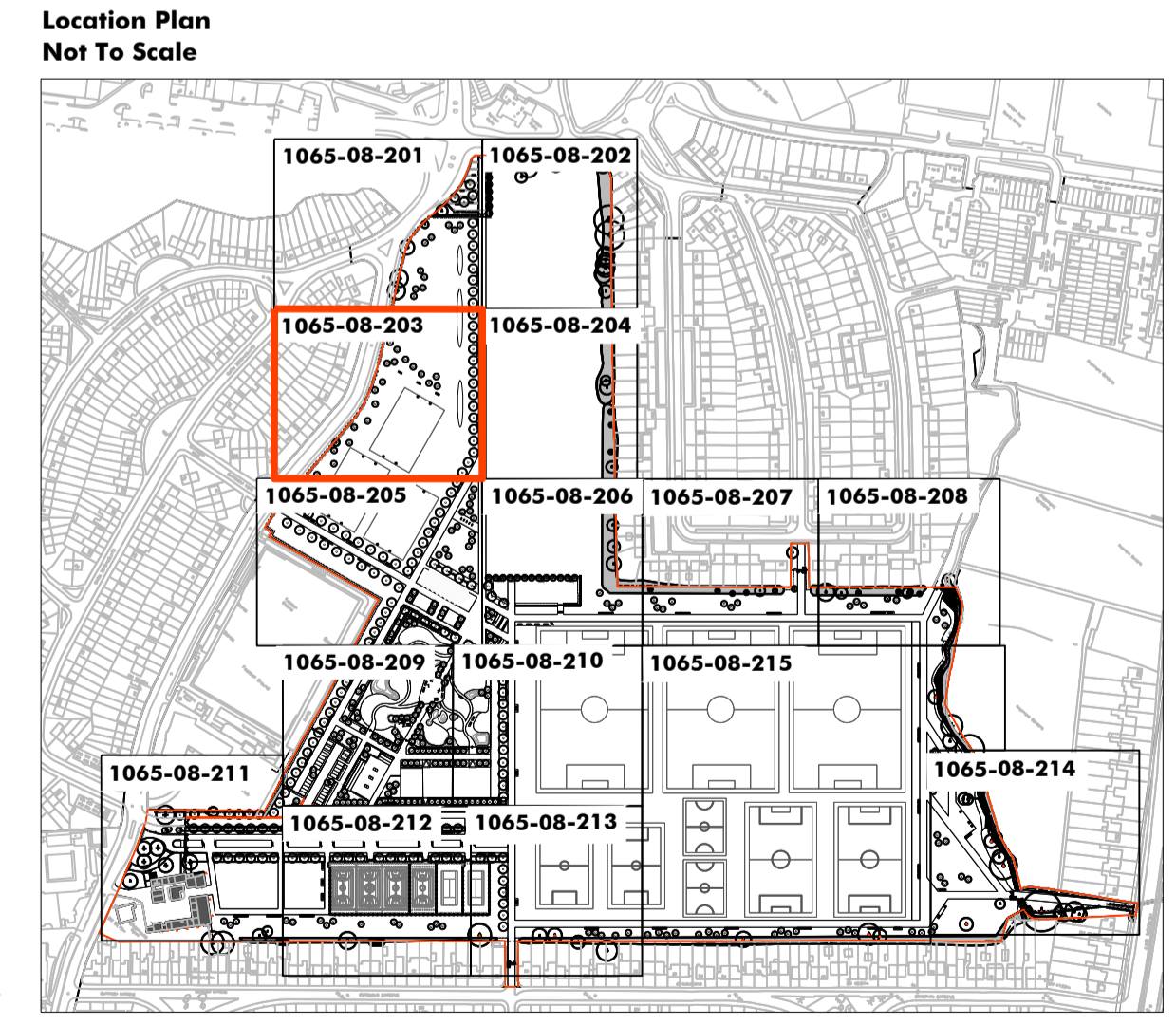
- SITE BOUNDARY**
- RETAINED TREES**  
Refer to drawing 1065-08-050, 051, 052, 053, 054, 054  
Tree Retention and Removal Drawings for details
- RETAINED VEGETATION**  
Refer to drawing 1065-08-050, 051, 052, 053, 054, 054  
Tree Retention and Removal Drawings for details
- PROPOSED TREE PLANTING**
- PROPOSED ORNAMENTAL SHRUB PLANTING**
- PROPOSED HEDGE PLANTING**
- PROPOSED AMENITY GRASS AREAS**  
British Seed Houses 'A19' grass seed mix
- PROPOSED SPORTS PITCH GRASS SEED**  
TBC by specialist Sports Pitch Contractor
- PROPOSED WILDFLOWER MEADOW AREAS**  
Emorsgate EM1 seed mix - basic general purpose meadow mixture
- PROPOSED DAMP GRASSLAND AREAS**  
Emorsgate EM8 seed mix - mixture for wetlands
- PROPOSED HEDGEROW SEED MIX**  
Emorsgate EH1 seed mix - hedgerow mixture
- PROPOSED MARGINAL SEED MIX**  
Emorsgate EP1 seed mix - pond edge mixture

Please refer to drawing 1065-08-204

**Notes:**

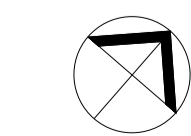
Refer to General Arrangement drawings: 1065-08-50, 1065-08-51, 1065-08-52, 1065-08-53, 1065-08-54 for hard landscape elements

Refer to Clitterhouse Playing Fields Design Development Report for pot sizes and densities



Please refer to drawing 1065-08-205

Revision	Description	Drawn by	Checked by	Date
-	Phase 1AN RMA Submission	WH	GJ	14.11.14
A	Minor Amendments for Phase 1AN RMA	WH	JP	28.11.14
B	Phase 1AN RMA Submission	GG	JP	29.01.15
C	Phase 1AN RMA Submission	GG	JP	13.05.15
D	Minor Amendments for Phase 1AN RMA	AP	JP	11.06.15



**Macgregor • Smith**  
Landscape Architecture

project	Brent Cross Cricklewood	drawn by	CvS
status	Phase 1AN RMA Submission	checked by	GJ
title	Clitterhouse Playing Fields Planting Plan 3	date	28.07.14
Xref	xref	scale	1:250@A1
drawing No	1065-08-203	revision	<b>D</b>

This drawing is protected by copyright. Contractors must check all dimensions on site. Only figure dimensions are to be worked from. Discrepancies must be reported to architect before proceeding.  
Christopher House, 11-12 High Street, Bath, BA1 5AG Tel:01225 464 690 Fax:01225 429 962 enquiries@macgregor-smith.co.uk