

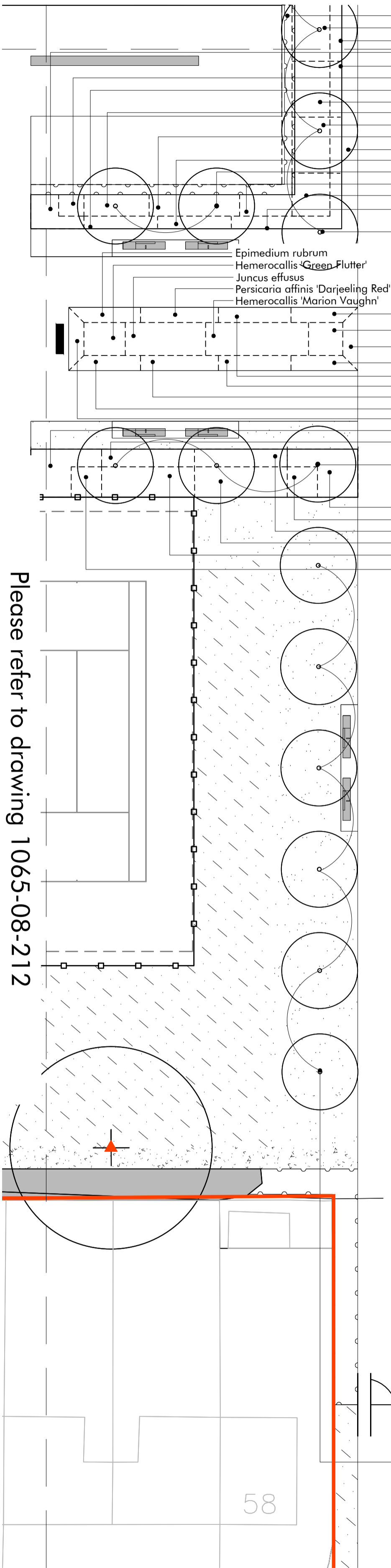
Please refer to drawing 1065-08-210

*Euonymus ovatus* 'Aureus'  
*Cortaderia selloana* 'Pumila'  
*Rudbeckia fulgida* 'Goldstrum'  
*Luzula sylvatica* 'Aurea'  
*Rosa* 'Gwent'  
*Oenothera biennis*  
*Rosa* 'Gwent'  
*Hypericum calycinum* 'Hidcote'  
*Hypericum calycinum* 'Hidcote'  
*Cortaderia selloana* 'Pumila'  
*Cortaderia selloana* 'Pumila'  
*Rudbeckia fulgida* 'Goldstrum'  
*Rudbeckia fulgida* 'Goldstrum'  
 2no. *Liriodendron tulipifera* 30-35cm girth C/S  
*Hypericum calycinum* 'Hidcote'  
*Verbena bonariensis*  
*Rosa* 'Gwent'  
*Luzula sylvatica* 'Aurea'  
 Group of *Quercus palustris*,  
 3no. of 7 total (refer to drawings 1065-08-210)  
 30-35cm girth C/S

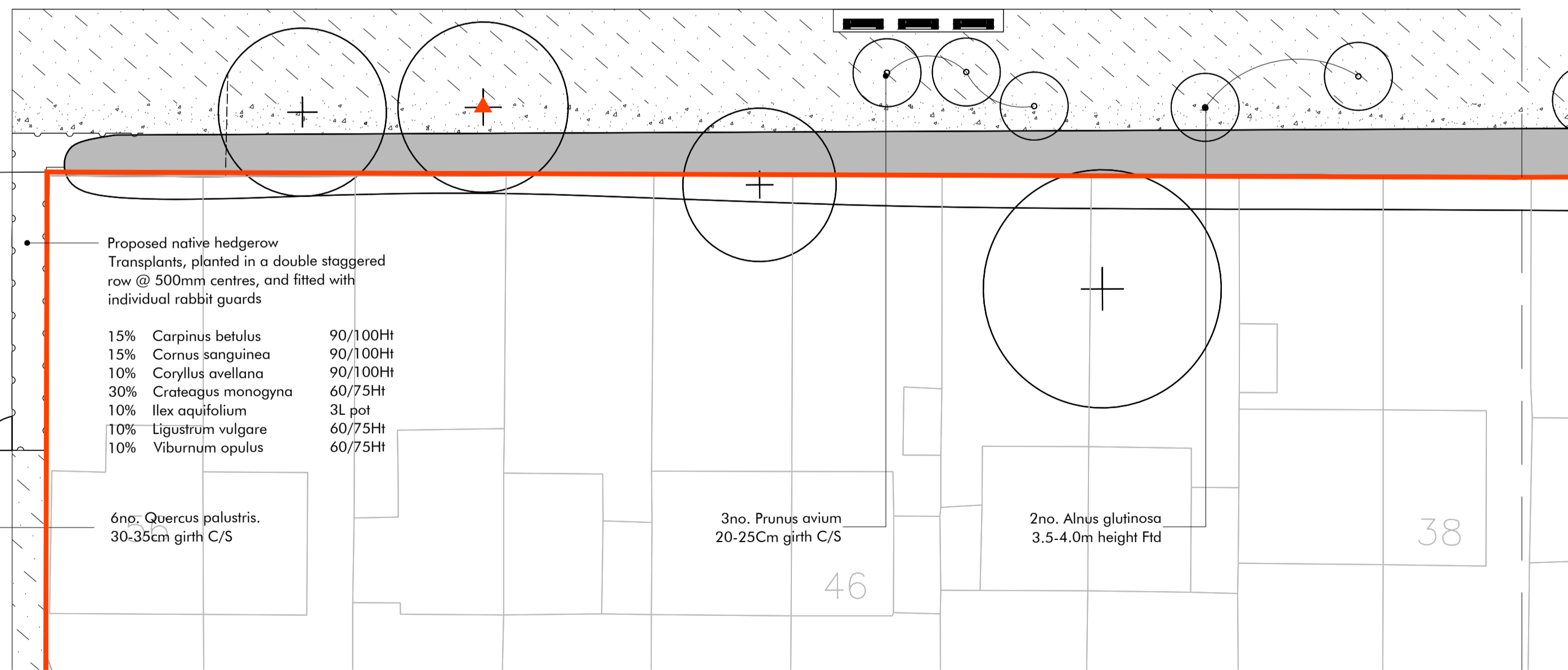
*Bergenia cordifolia*  
*Iris pseudacorus*  
*Echinacea purpurea*  
*Lythrum salicaria*  
*Luzula sylvatica* 'Aurea'  
*Carex festacea*  
*Echinacea purpurea*  
*Bergenia cordifolia*  
*Persicaria affinis* 'Darjeeling Red'

*Luzula sylvatica* 'Aurea'  
*Rosa* 'Gwent'  
 3no. *Liriodendron tulipifera*  
 30-35cm girth C/S

*Luzula sylvatica* 'Aurea'  
*Verbena bonariensis*  
*Rudbeckia fulgida* 'Goldstrum'  
*Hypericum calycinum* 'Hidcote'  
*Cortaderia selloana* 'Pumila'  
*Oenothera biennis*



Please refer to drawing 1065-08-212



Proposed native hedgerow  
 Transplants, planted in a double staggered  
 row @ 500mm centres, and fitted with  
 individual rabbit guards

15% *Carpinus betulus* 90/100Ht  
 15% *Cornus sanguinea* 90/100Ht  
 10% *Coryllus avellana* 90/100Ht  
 30% *Crateagus monogyna* 60/75Ht  
 10% *Ilex aquifolium* 3L pot  
 10% *Ligustrum vulgare* 60/75Ht  
 10% *Viburnum opulus* 60/75Ht

6no. *Quercus palustris*,  
 30-35cm girth C/S

3no. *Prunus avium*  
 20-25cm girth C/S

2no. *Alnus glutinosa*  
 3.5-4.0m height Fld

38

58

46

Please refer to drawing 1065-08-215

**KEY**  
**SITE BOUNDARY**

**RETAINED TREES**  
 Refer to drawing 1065-08-050, 051, 052, 053, 054, 054  
 Tree Retention and Removal Drawings for details

**RETAINED VEGETATION**  
 Refer to drawing 1065-08-050, 051, 052, 053, 054, 054  
 Tree Retention and Removal Drawings for details

**PROPOSED TREE PLANTING**

**PROPOSED ORNAMENTAL SHRUB PLANTING**

**PROPOSED HEDGE PLANTING**

**PROPOSED AMENITY GRASS AREAS**  
 British Seed Houses 'A19' grass seed mix

**PROPOSED SPORTS PITCH GRASS SEED**  
 TBC by specialist Sports Pitch Contractor

**PROPOSED WILDFLOWER MEADOW AREAS**  
 Emorsgate EM1 seed mix - basic general purpose meadow mixture

**PROPOSED DAMP GRASSLAND AREAS**  
 Emorsgate EM8 seed mix - mixture for wetlands

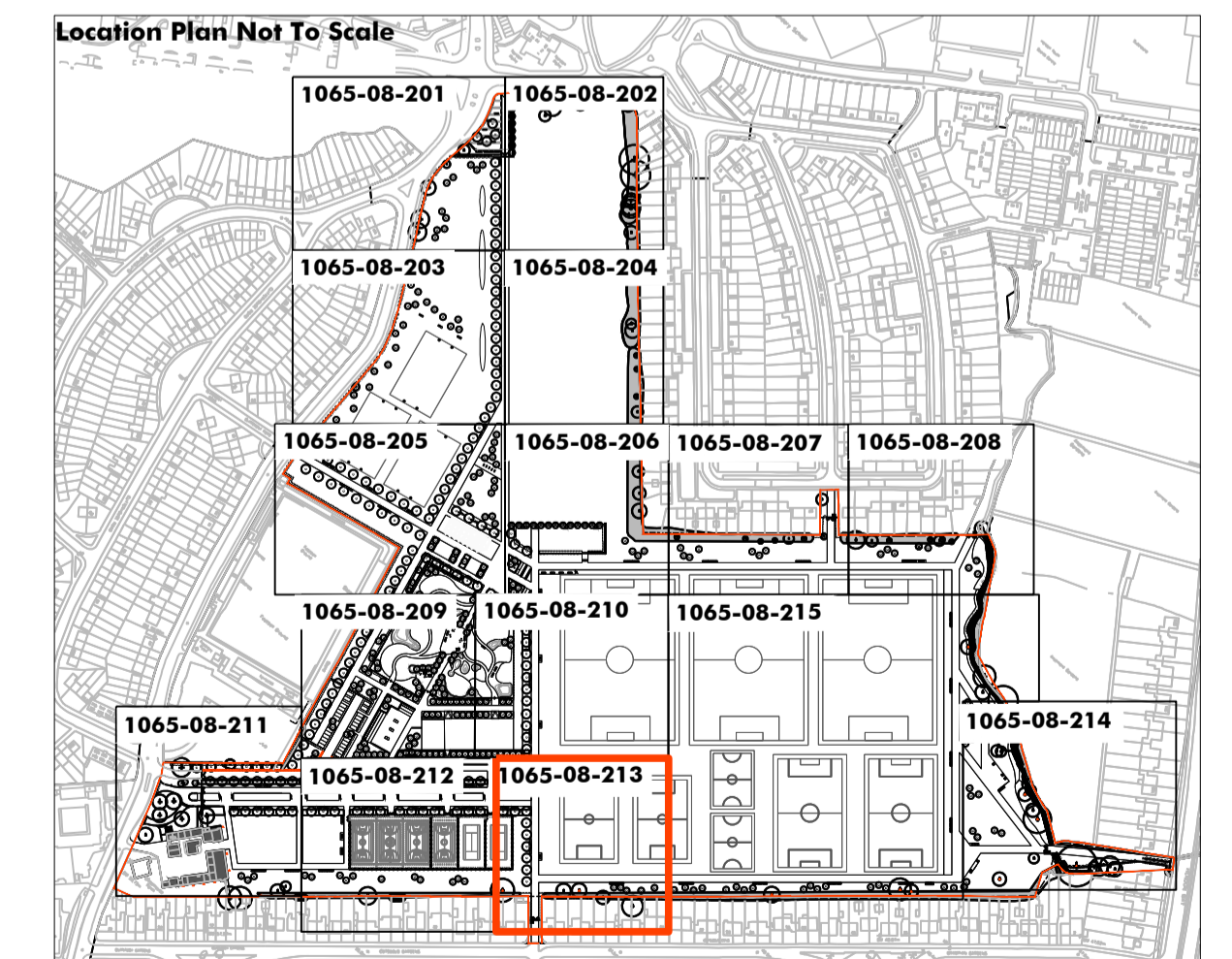
**PROPOSED HEDGEROW SEED MIX**  
 Emorsgate EH1 seed mix - hedgerow mixture

**PROPOSED MARGINAL SEED MIX**  
 Emorsgate EP1 seed mix - pond edge mixture

Notes:

Refer to General Arrangement drawings: 1065-08-50, 1065-08-51,  
 1065-08-52, 1065-08-53, 1065-08-54 for hard landscape elements

Refer to Clitterhouse Playing Fields Design Development Report for pot sizes  
 and densities



Macgregor • Smith  
 Landscape Architecture

Revision	Description	Drawn by	Checked by	Date
-	Phase 1AN RMA Submission	WH	GJ	14.11.14
A	Minor Amendments for Phase 1AN RMA	WH	JP	28.11.14
B	Phase 1AN RMA Submission	GG	JP	29.01.15
C	Phase 1AN RMA Submission	GG	JP	13.05.15
D	Minor Amendments for Phase 1AN RMA	AP	JP	11.06.15

project	Brent Cross Cricklewood	drawn by	CvS
status	Phase 1AN RMA Submission	checked by	GJ
title	Clitterhouse Playing Fields Planting Plan 13	date	28.07.14
Xref	xref	scale	1:250@A1
drawing No	1065-08-213	revision	<b>D</b>

