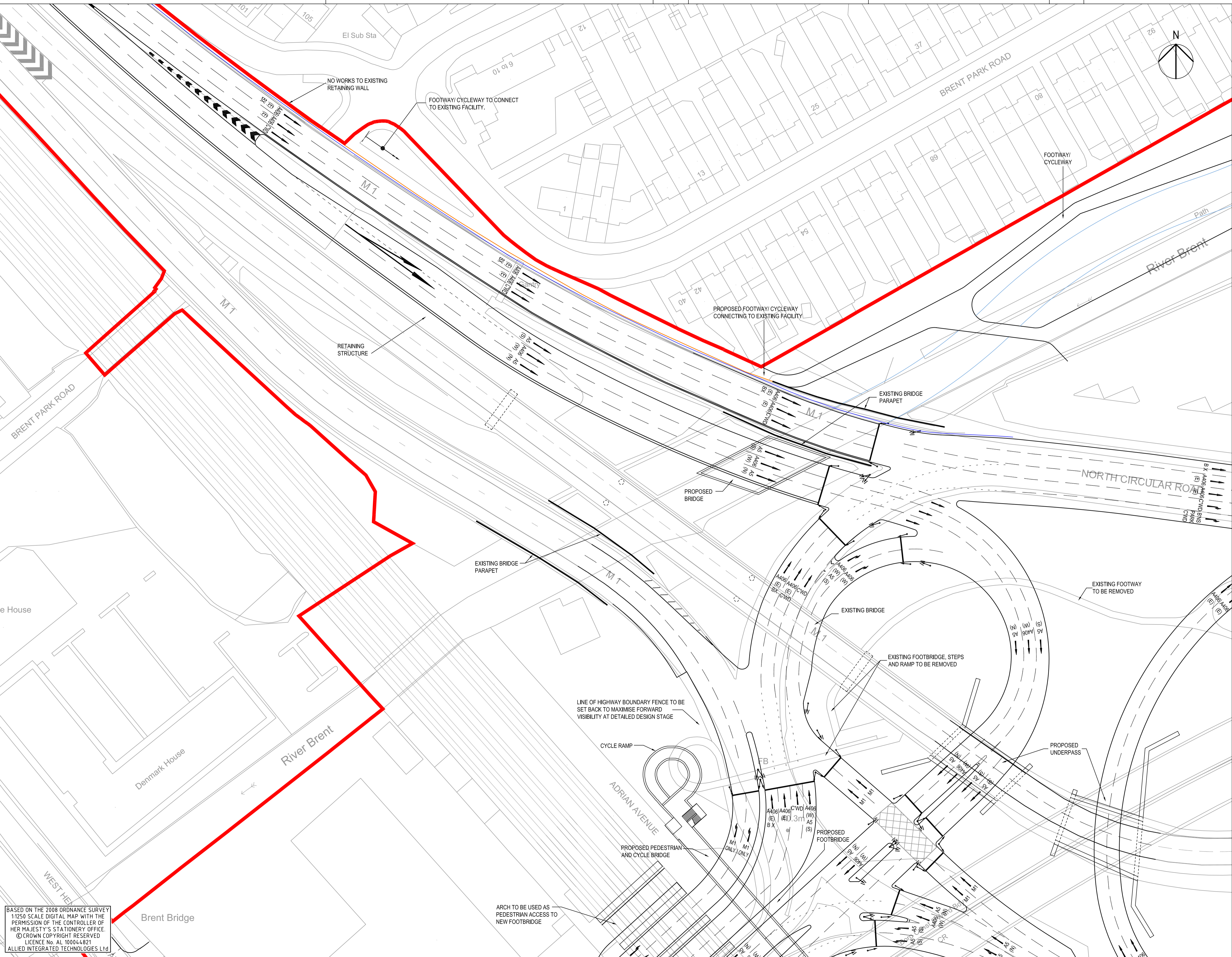


Plot Date: 09-May-09 04:38 PM BY: 31124ah  
 AutoCAD File Name: [?] K:\D11870\_100\_1011-F.dwg [5 Xrefs] X:\New-Rail-Design\070119.DWG X:\OS-Bases\080728.DWG X:\New-Highway-Design\080428.DWG X:\Rel-Line-Boundary\080115.DWG X:\New-Bridge-Design\081021.DWG



**NOTES**

- FOR LOCATION REFER TO KEY PLAN DRAWING P/D111870/H/100/1000.
- THE ISSUES ARISING FROM THE STAGE 1 SAFETY AUDIT, MAY 2008 MUST BE FULLY ACTIONED AT THE DETAILED DESIGN STAGE. KEY ISSUES INCLUDE:
  - USE OF GANTRY SIGNALS ON TILLING ROAD.
  - RELOCATE TRAFFIC SIGNAL HEADS AT VARIOUS LOCATIONS TO MINIMISE SIGNAL INTERVISIBILITY.
  - ENSURE ADEQUATE HEADROOM IS PROVIDED THROUGH RAILWAY ARCHES.
  - ENSURE SAFE EGRESS FACILITIES FROM CAR DEALERSHIP ARE PROVIDED.
  - CONSIDER USE OF HIGH CONTAINMENT KERBS FOR CENTRAL RESERVE ON TILLING ROAD AND 'SLOW' ROAD MARKINGS.
  - CONSIDER USE OF GANTRY SIGNS WHERE POSSIBLE TO ASSIST DRIVERS SELECTING CORRECT LANE.
  - EXTEND LENGTH OF LANE GAIN CIRCULARITY AT END OF M1 SOUTHBOUND. THIS HAS ALREADY BEEN ACTIONED.
  - REVIEW DESTINATION ROAD MARKINGS TO REMOVE THE OPTION FOR MOTORISTS TO USE 2 LANES THAT THEN REDUCE TO 1 LANE OVER SHORT DISTANCES AT VARIOUS LOCATIONS.

**KEY**

- PLANNING APPLICATION BOUNDARY
- EXISTING RETAINING WALL
- EXISTING SAFETY BARRIER

Revision	By	Date	Check	Suffix
BRIDGE DETAIL AND RSA ISSUES ADDED	AH	30.04.09		F
CYCLE RAMPS ADDED AT BRIDGE B6	SH	21.01.09		E
FOOTBRIDGE WIDENED AND REALIGNED	PO	05.11.08		D
OS MAPPING AND HIGHWAY LAYOUT REVISED	AJA	26.08.08		C
PLANNING APPLICATION BOUNDARY AND HIGHWAY LAYOUT REVISED	AH	29.02.08		B
FOOTWAY/ CYCLEWAY ADDED.	SES	13.03.07		A

Drawing Status

**OUTLINE PLANNING**

Job Title

**BRENT CROSS/ CRICKLEWOOD REGENERATION**

Drawing Title

**PROPOSED HIGHWAY LAYOUT (M1/A406/A5)**

**SHEET 11 OF 31**

Scale at A1  
1:500

Stage 1 check	Stage 2 check	Originated	Date
SES			19.01.07

This document has been prepared in accordance with the scope of Scott Wilson's appointment with its client and is subject to the terms of that appointment. Scott Wilson accepts no liability for any use of this document other than by its client and only for the purposes for which it was prepared and provided.  
© Scott Wilson Ltd 2008

Scott Wilson  
 Scott House  
 Altonon Link, Basingstoke  
 Hampshire, RG21 7PP  
 Telephone (01256) 310200  
 Fax (01256) 310201  
 www.scottwilson.com

Drawing Number	Rev
P/D111870/H/100/1011	F

BASED ON THE 2008 ORDNANCE SURVEY  
 1:250 SCALE DIGITAL MAP WITH THE  
 PERMISSION OF THE CONTROLLER OF  
 HER MAJESTY'S STATIONERY OFFICE.  
 © CROWN COPYRIGHT RESERVED  
 LICENCE No. AL 100044821  
 ALLIED INTEGRATED TECHNOLOGIES Ltd