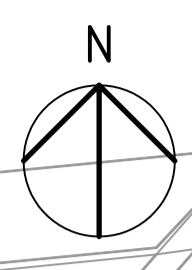
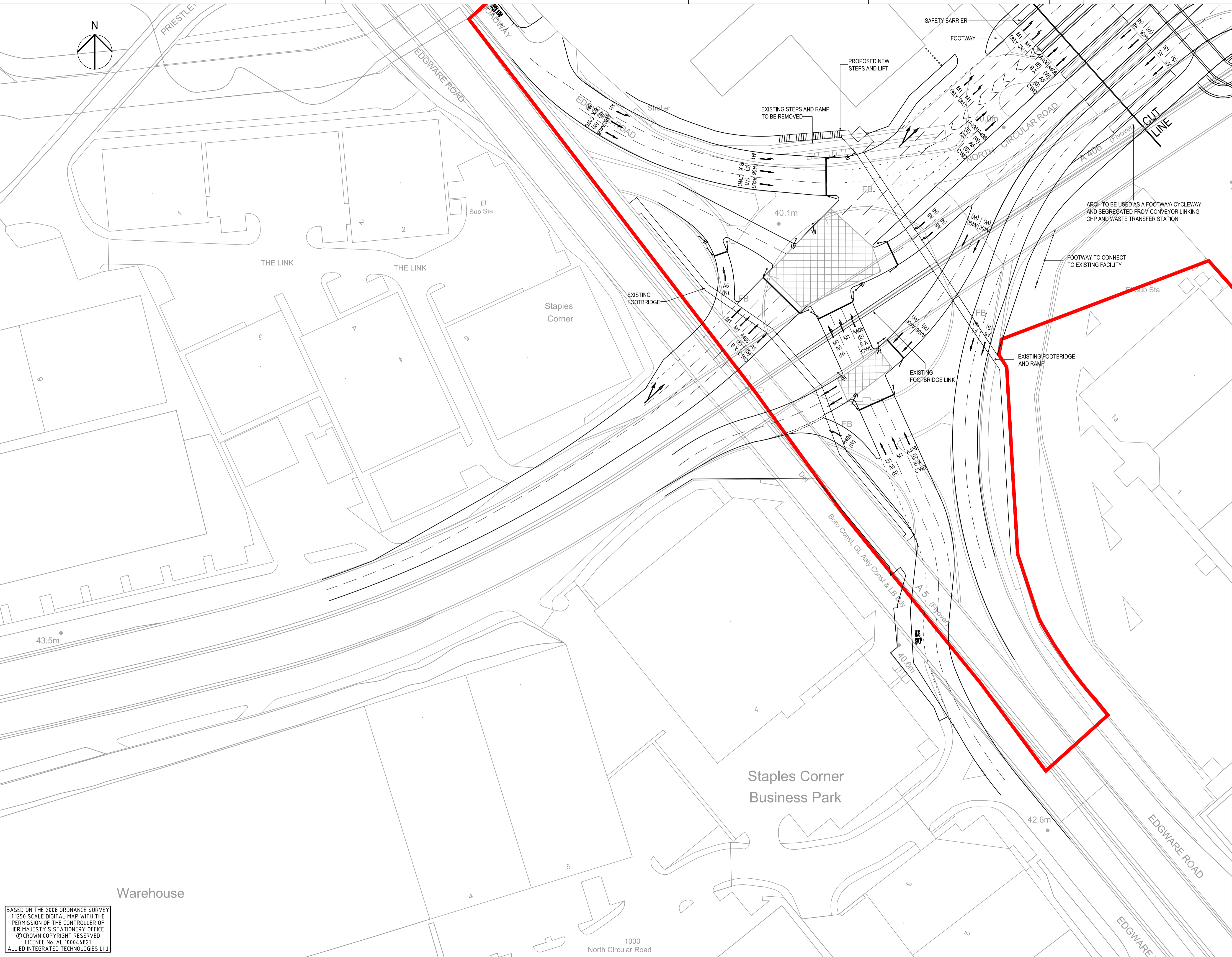


Plot Date: 09-May-09 04:39 PM BY: 31124ah
 AutoCAD File Name: [77]K:\D11870 - BXC06 Design\CAD\Sheets\Infrastructure Planning Application April 09\1091P_D111870_H_100_1012-F.dwg [4.Xref] X-OS-Base-080726.DWG X-New-Bridge-Design-081021.DWG X-Rec-Line-Boundary-090115.DWG X-New-Highway-Design-090228.DWG



- ### NOTES
- FOR LOCATION REFER TO KEY PLAN DRAWING PD111870/H/100/1000.
 - THE ISSUES ARISING FROM THE STAGE 1 SAFETY AUDIT, MAY 2008 MUST BE FULLY ACTIONED AT THE DETAILED DESIGN STAGE. KEY ISSUES INCLUDE:
 - USE OF GANTRY SIGNALS ON TILLING ROAD.
 - RELOCATE TRAFFIC SIGNAL HEADS AT VARIOUS LOCATIONS TO MINIMISE SIGNAL INTERVISIBILITY.
 - ENSURE ADEQUATE HEADROOM IS PROVIDED THROUGH RAILWAY ARCHES.
 - ENSURE SAFE EGRESS FACILITIES FROM CAR DEALERSHIP ARE PROVIDED.
 - CONSIDER USE OF HIGH CONTAINMENT KERBS FOR CENTRAL RESERVE ON TILLING ROAD AND 'SLOW' ROAD MARKINGS.
 - CONSIDER USE OF GANTRY SIGNS WHERE POSSIBLE TO ASSIST DRIVERS SELECTING CORRECT LANE.
 - EXTEND LENGTH OF LANE GAIN CIRCULARLY AT END OF M1 SOUTHBOUND. THIS HAS ALREADY BEEN ACTIONED.
 - REVIEW DESTINATION ROAD MARKINGS TO REMOVE THE OPTION FOR MOTORISTS TO USE 2 LANES THAT THEN REDUCE TO 1 LANE OVER SHORT DISTANCES AT VARIOUS LOCATIONS.

KEY

— PLANNING APPLICATION BOUNDARY

Revision	By	Date	Suffix
BRIDGE DETAIL AND RSA ISSUES ADDED	AH AJA	30.04.09	F
CYCLE RAMPS ADDED AT BRIDGE B6	SH AJA	21.01.09	E
FOOTBRIDGE WIDENED AND REALIGNED	PO AJA	05.11.08	D
OS MAPPING AND HIGHWAY LAYOUT REVISED	AH AJA	26.08.08	C
PLANNING APPLICATION BOUNDARY AND HIGHWAY LAYOUT REVISED	AH AJA	29.02.08	B
FOOTWAY/ CYCLEWAY ADDED.	EN SES	13.03.07	A

Drawing Status
OUTLINE PLANNING

Job Title
BRENT CROSS/ CRICKLEWOOD REGENERATION

Drawing Title
PROPOSED HIGHWAY LAYOUT (M1/A406/A5)

SHEET 12 OF 31

Scale at A1
1:500

Drawn	Approved
AH	
Stage 1 check AVT	Stage 2 check Originated Date 05.01.07

This document has been prepared in accordance with the scope of Scott Wilson's appointment with its client and is subject to the terms of that appointment. Scott Wilson accepts no liability for any use of this document other than by its client and only for the purposes for which it was prepared and provided.
© Scott Wilson Ltd 2008

Scott Wilson
 Scott House
 Altonon Link, Basingstoke
 Hampshire, RG21 7PP
 Telephone (01256) 310200
 Fax (01256) 310201
 www.scottwilson.com



Drawing Number
P/D111870/H/100/1012

Rev
F

BASED ON THE 2008 ORDNANCE SURVEY 1:250 SCALE DIGITAL MAP WITH THE PERMISSION OF THE CONTROLLER OF HER MAJESTY'S STATIONERY OFFICE. © CROWN COPYRIGHT RESERVED LICENCE No. AL 100044821 ALLIED INTEGRATED TECHNOLOGIES Ltd