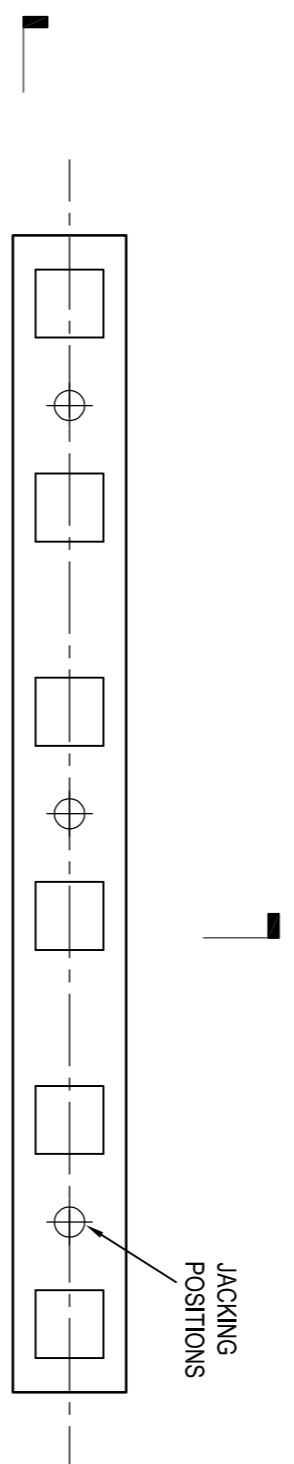
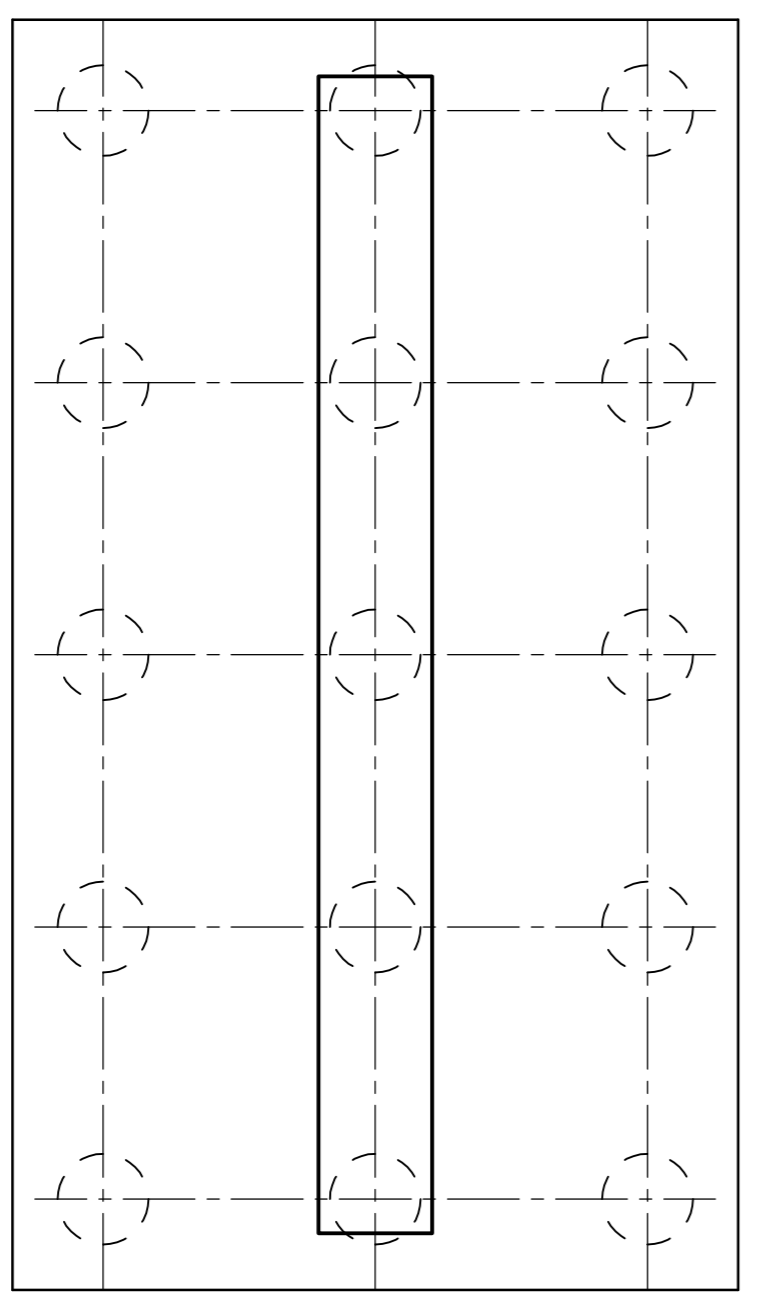


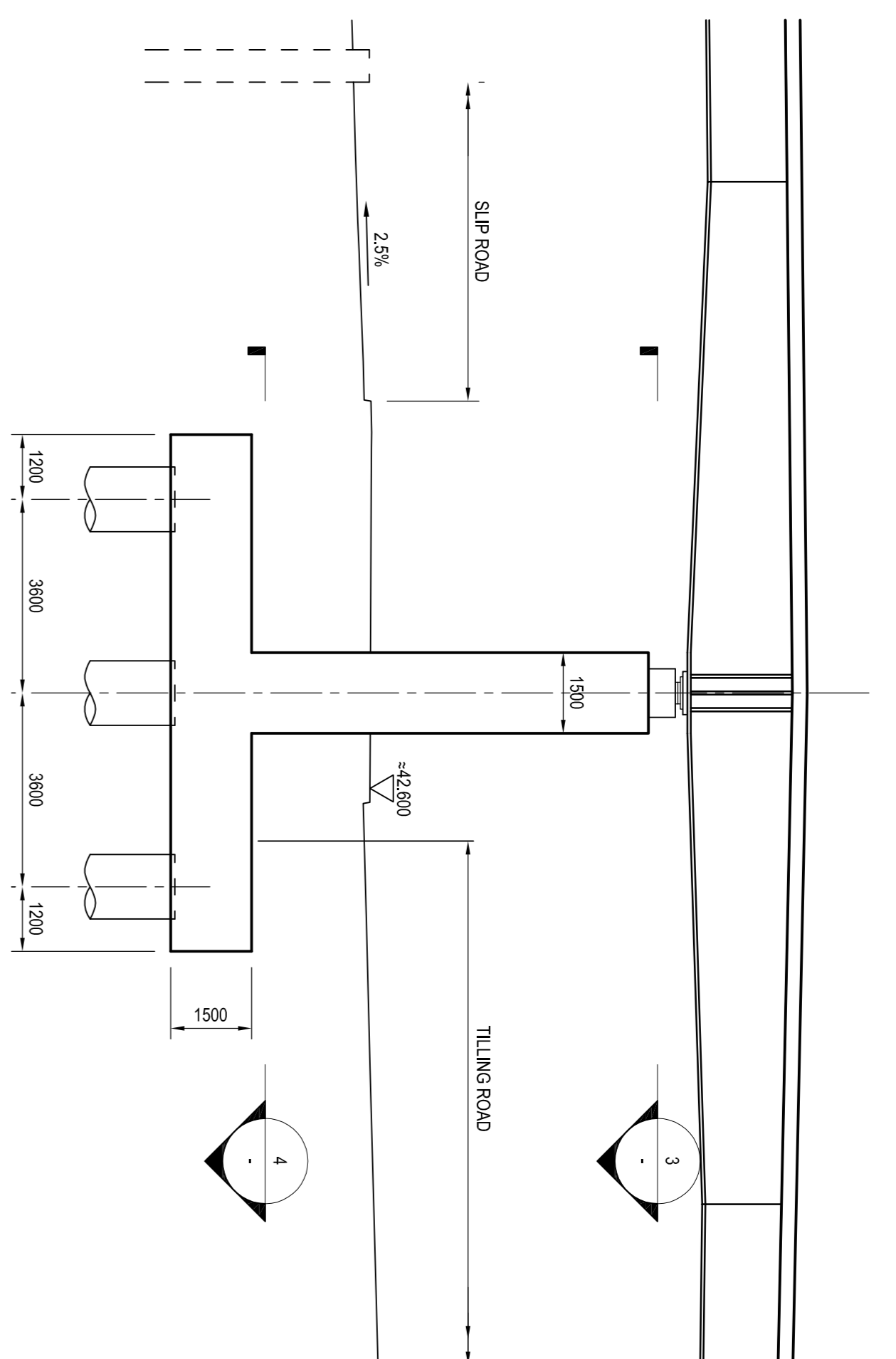
**SECTION 1-1
 ELEVATION OF PIER 3
 (LOOKING SOUTH)**
 (1:100)



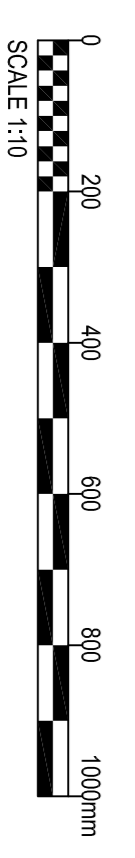
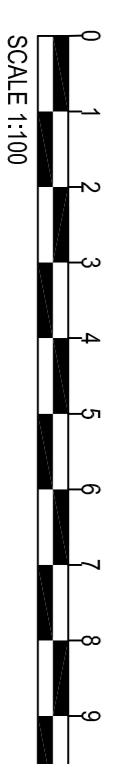
**SECTION 2-2
 PLAN ON BEARING SHELF**
 (1:100)



**SECTION 3-3
 PLAN ON PILE CAP**
 (1:100)



SECTION 2-2
 (1:100)



Revision Details	By	Check	Date	Scale
Parapet containment amended; Deck construction (part (G) added;	SM	MDH	03/09/15	P05
Parapet containment amended; Deck added;	SM	MDH	16/10/15	P06
Fall added to surfacing on Section 1-1, Note 5	SM	P07	22/10/15	P07

NOTES

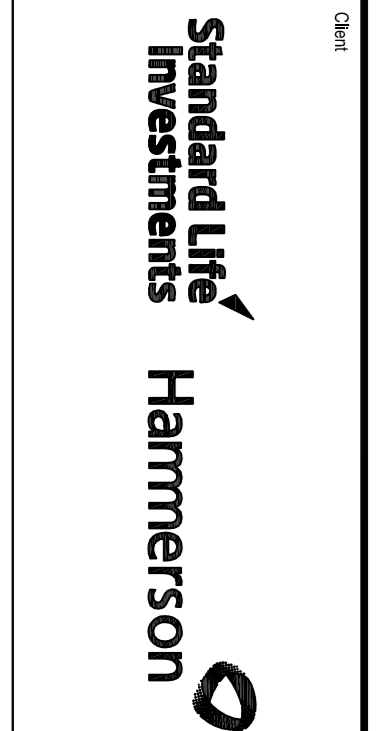
1. THESE DRAWINGS TO BE READ IN CONJUNCTION WITH ALL OTHER RELEVANT DOCUMENTS.
2. DO NOT SCALE FROM THESE DRAWINGS FOR CONSTRUCTION PURPOSES. USE ONLY DIMENSIONS AND DIMENSION LINES.
3. ALL CHANGES, LETTERS AND COMMENTS ARE IN RED IN THESE UNLESS OTHERWISE STATED.
4. THESE DRAWINGS TO BE READ IN CONJUNCTION WITH THE PROJECT HEALTH & SAFETY DOCUMENT.
5. FINAL FOUNDATION DETAILS TO BE SUBMITTED UNDER CONSTRUCTION.

SAFETY, HEALTH AND ENVIRONMENTAL INFORMATION BOX

IT IS ASSUMED THAT ALL WORKS ON THIS DRAWING WILL BE CARRIED OUT BY A COMPETENT CONTRACTOR WORKING UNDER APPROPRIATE HEALTH AND SAFETY METHODS STATEMENT.

THIS DRAWING IS TO BE USED ONLY FOR THE PURPOSE OF ISSUE THAT IT WAS ISSUED FOR AND IS SUBJECT TO AMENDMENT.

Approval in Principle



Project Title
BRENT CROSS CRICKLEWOOD

Drawing Title
TEMPELHOFF BRIDGE GENERAL ARRANGEMENT PIER 3 DETAILS

Author	T. Stone	Checker	M. Hepper	Date	22/10/15
Issue Number	47028505	Scale	3000 Scale as NIP		
AS SHOWN		2mm	3mm		

URS Infrastructure & Environment UK Limited
 100 Broadwalk
 London E14 4EU
 Tel: +44 (0)208 510000
 Fax: +44 (0)208 510001
www.urscorp.com

Drawing Number
BXCRCR-JRS-B1-HS-AP-SE-00005

Rev
P07

