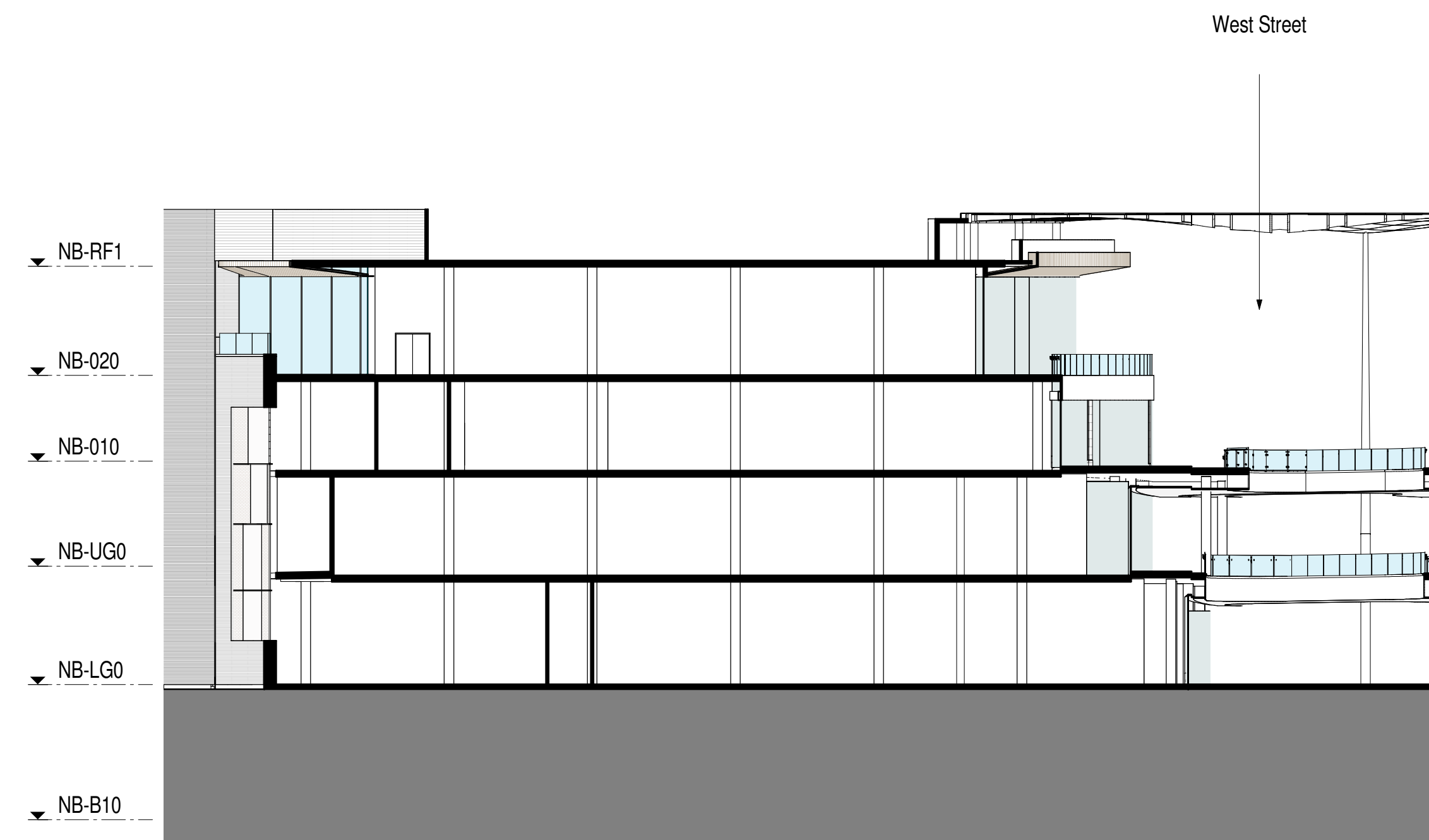


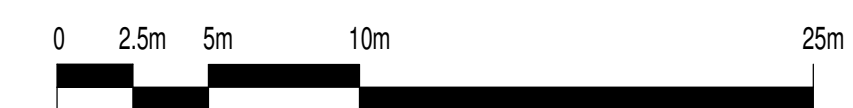
1 WESTERN RETAIL BUILDING SECTION 01
1:250



2 WESTERN RETAIL BUILDING SECTION 02
1:250



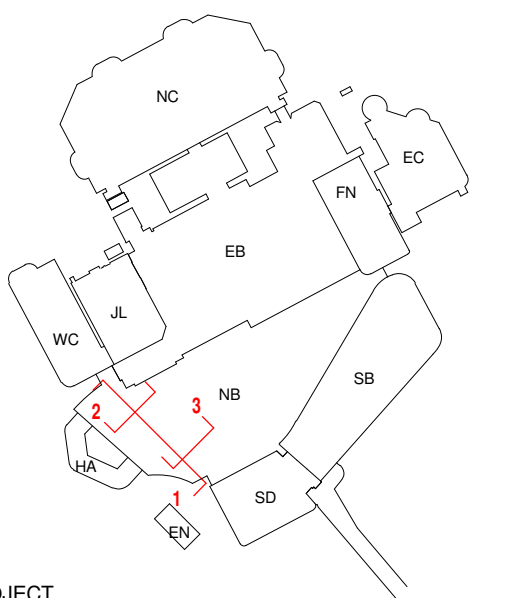
3 WESTERN RETAIL BUILDING SECTION 3
1:250



GENERAL NOTES
All rights reserved.
All drawings and written material appearing here, constitute original and unpublished work of the Architect and may not be duplicated, used or disclosed without written consent of the Architect.
Notes and material designations are typical for similar conditions unless otherwise indicated.
Do not scale from this drawing except for town planning purposes.
Please see notes attached at drawing notes 01.
Where it is a composite drawing of CRTKL + CT, CT buildings are indicated in grey.

REV NO.	DATE	DESCRIPTION
P5	21/04/17	RMA Final Issue A
P4	29/03/17	RMA Final Issue
P3	17/03/17	RMA Draft 3
P2	06/03/17	RMA Draft 2
P1	10/02/17	RMA Draft Issue for Comment

KEY PLAN



PROJECT
Brent Cross Phase 1B (North) RMA

CLIENT
Hammerston
Standard Life Investments

CALLISONRTKL
A DESIGN CONSULTANCY OF ARCADIS
CALLISONRTKL
25 Farringdon Street, 10th Floor
London EC4A 4AB
T: +44(0)20 7306 0404

SHEET IDENTIFICATION
TITLE
WESTERN RETAIL BUILDING SECTION

STATUS
PLANNING

PROJECT NUMBER: 50-14026
DATE DRAWN: 02/06/17
SCALE @ A1: 1:250
DRAWN BY: MN
CHECKED BY: NG

08069-CRL-SW-XXX-DR-P-20116 P5

© 2016 CALLISONRTKL UK Ltd

21/04/2017 17:36:57