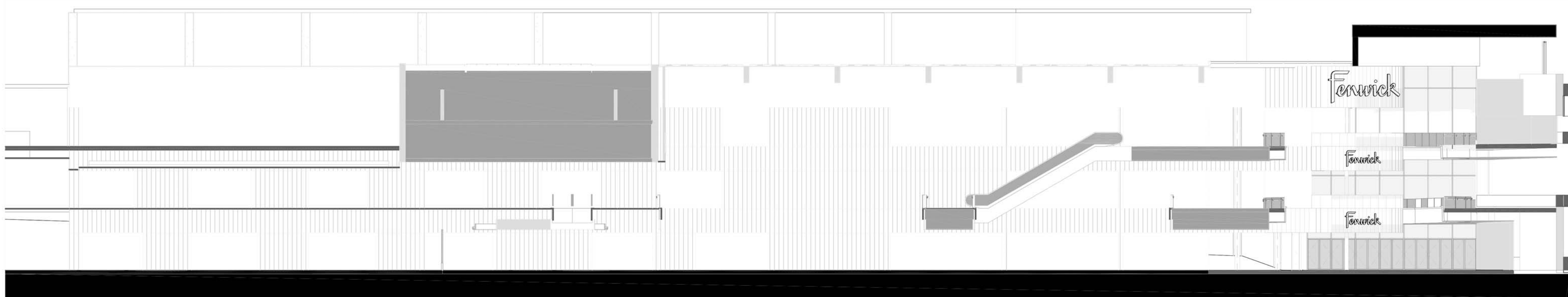


KEY PLAN

NOTES

DO NOT SCALE FROM THIS DRAWING EXCEPT FOR THE PURPOSES OF TOWN PLANNING.  
PLEASE SEE NOTES ATTACHED AT DRAWING NOTES Q1.

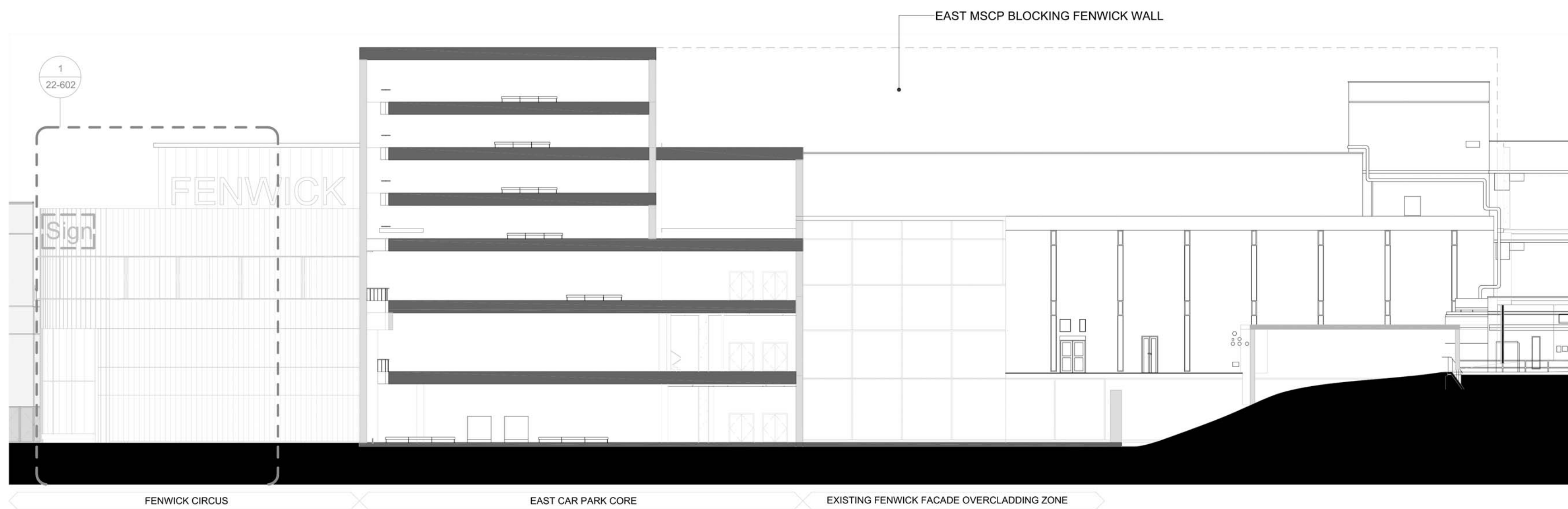
© COPYRIGHT CHAPMAN TAYLOR 2017



**3 WEST ELEVATION** (INDICATIVE - FOR ILLUSTRATIVE PURPOSES ONLY)  
1 : 250



**2 SOUTH ELEVATION**  
1 : 250



**1 EAST ELEVATION**  
1 : 250

REV	DATE	BY	DESCRIPTION	CHKD
P5	12.04.17	ALH	Over Cladding Revised	IC
P4	29.03.17	TK	RMA Issue	IC
P3	03.03.17	TK	Final Draft RMA Issue	IC
P2	10.02.17	TK	Issued for draft RMA	IC
P1	06.02.17	TK	Update for draft RMA	IC

PROJECT

**BRENT CROSS  
CRICKLEWOOD**

CLIENT



**Standard Life  
Investments**

ARCHITECT

**Chapman Taylor**  
INTERNATIONAL ARCHITECTS MASTERPLANNERS DESIGNERS  
10 Eastbourne Terrace, London, W2 6LG  
Tel +44 (0)207 371 3000 | Fax +44 (0)207 371 1949  
london@chapmantaylor.com

DRAWING TITLE

**FENWICK FACADE OVERCLAD  
ELEVATIONS  
EAST, SOUTH AND WEST**  
Scale 1 : 250 @ A1

JOB NO	ISSUE DATE	DRAWN BY	CHECKED BY				
334/CRIC	06.02.2017	ALH	IC				
PROJECT	ORIGINATOR	ZONE	LEVEL	TYPE	ROLE	NUMBER	REVISION
08069	CTA	FN	XXX	DR	A	21601	P5

