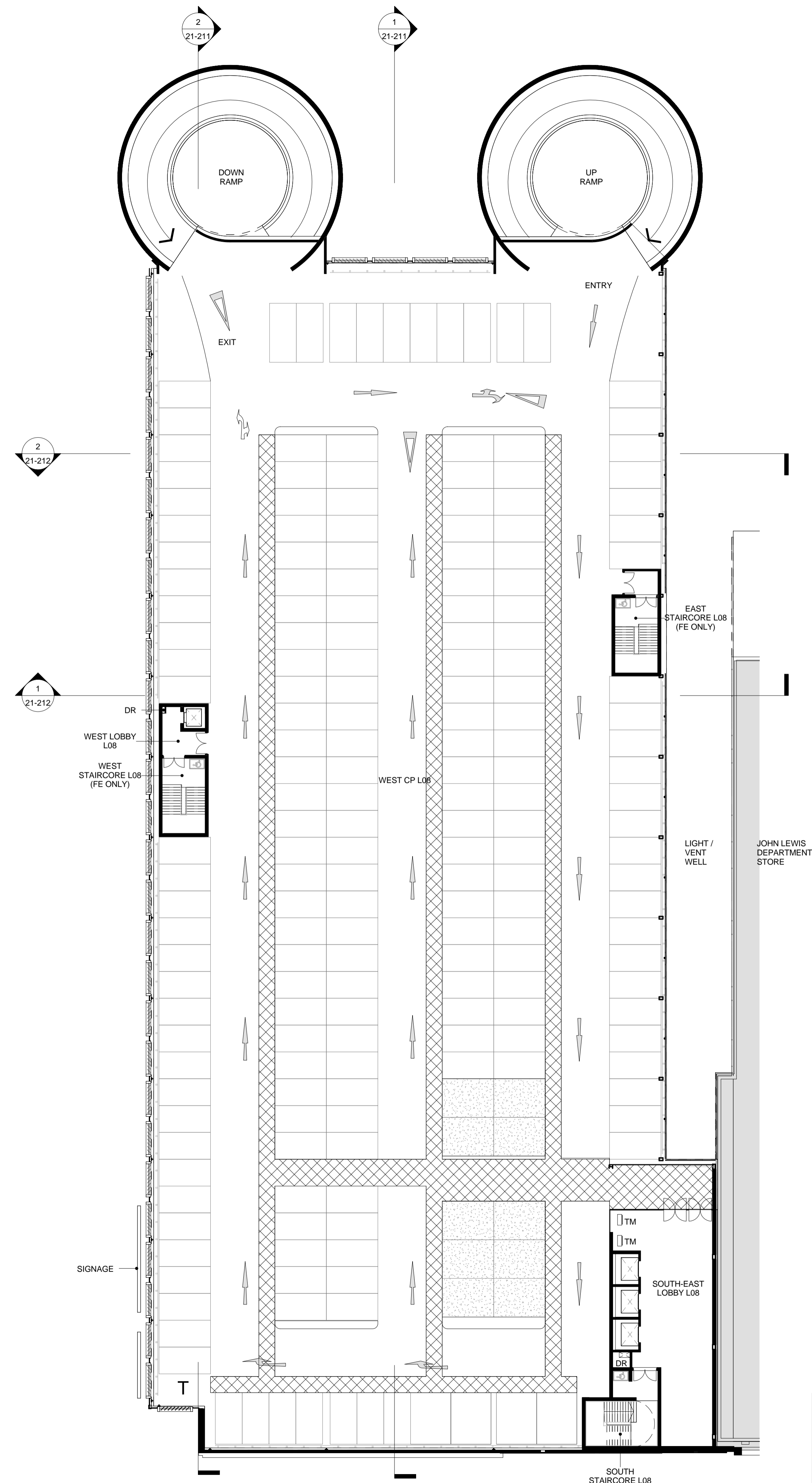
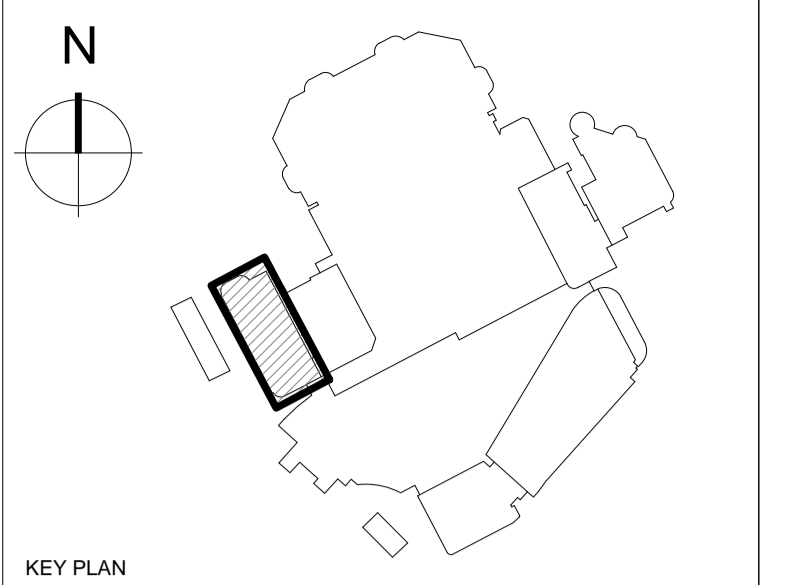


1 CP 07
1 : 250



2 CP 08
1 : 250



KEY PLAN
NOTES
DO NOT SCALE FROM THIS DRAWING EXCEPT FOR THE PURPOSES OF TOWN PLANNING.
PLEASE SEE NOTES ATTACHED AT DRAWING NOTES Q1.

© COPYRIGHT CHAPMAN TAYLOR 2017
SPACES AVAILABLE FOR POSSIBLE FUTURE USE FOR DISABLED PERSON PARKING
PEDESTRIAN CIRCULATION

REV	DATE	BY	DESCRIPTION	CHKD
P9	20.04.17	ALH	Revised Parking Layout	IC
P8	12.04.17	ALH	Revised Disabled Parking Layout	JH
P7	07.04.17	ALH	Parking Layout Revised	IC
P6	29.03.17	TK	RMA Issue	IC
P5	03.03.17	TK	Final Draft RMA Issue	IC
P4	10.02.17	TK	Issued for draft RMA	IC
P3	06.02.17	TK	Update for draft RMA	IC
P2	06.01.17	JC	General Updates	PH
P1	11.11.16	JC	Issued for Information	IC

PROJECT
BRENT CROSS CRICKLEWOOD



ARCHITECT
Chapman Taylor
INTERNATIONAL ARCHITECTS MASTERPLANNERS DESIGNERS
10 Eastbourne Terrace, London, W2 6LG
Tel +44 (0)207 371 3000 | Fax +44 (0)207 371 1949
london@chapmantaylor.com

DRAWING TITLE
WEST MSCP PLOT 110/111 GA PLANS

Scale 1 : 250 @ A1

JOB NO	ISSUE DATE	DRAWN BY	CHECKED BY				
CRIC 334	11.11.2016	JC	IC				
PROJECT	ORIGINATOR	ZONE	LEVEL	TYPE	ROLE	NUMBER	REVISION
08069	CTA	WC	ZZZ	DR	A	20204	P9