

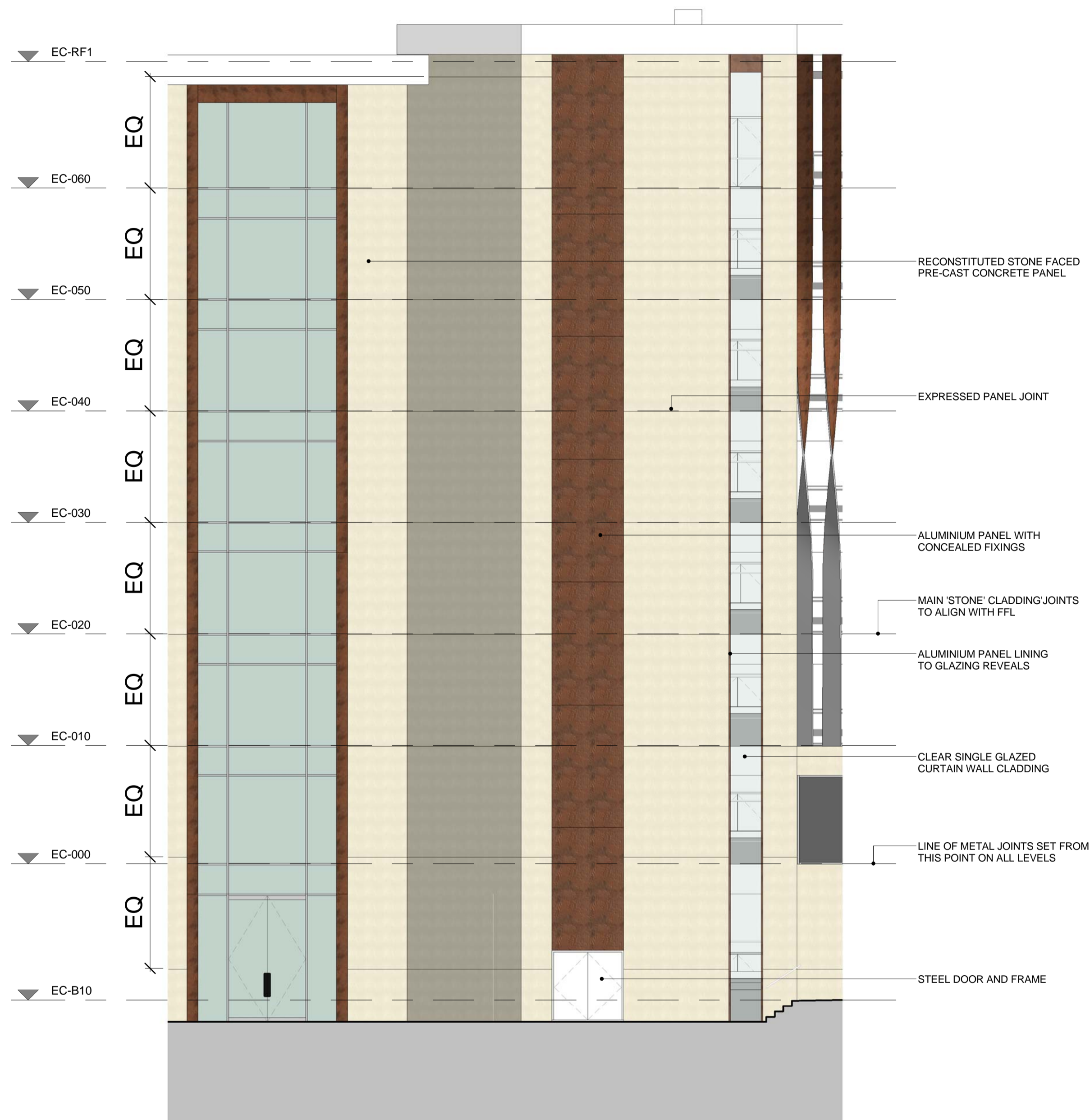
KEY PLAN

NOTES

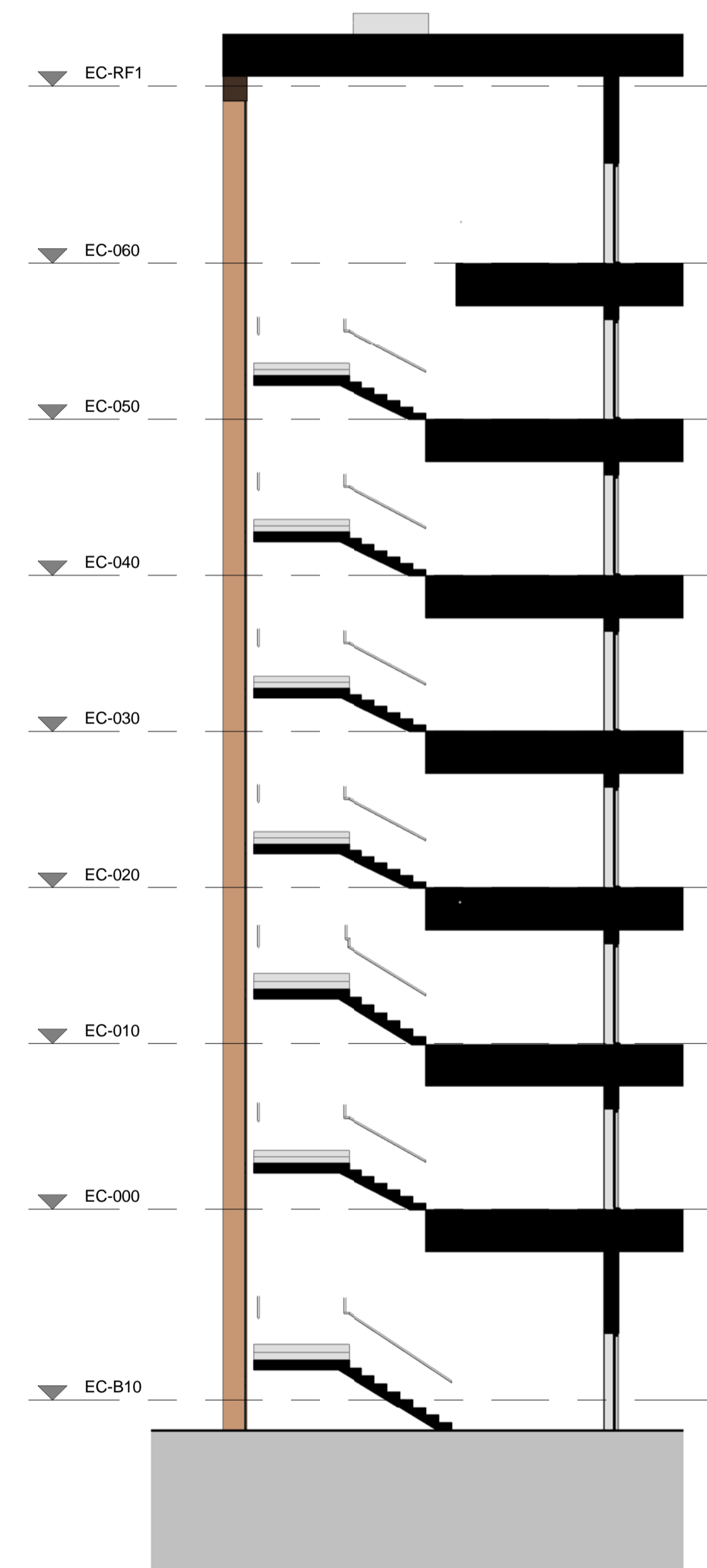
DO NOT SCALE FROM THIS DRAWING EXCEPT FOR THE PURPOSES OF TOWN PLANNING.
PLEASE SEE NOTES ATTACHED AT DRAWING NOTES Q1.

© COPYRIGHT CHAPMAN TAYLOR 2017

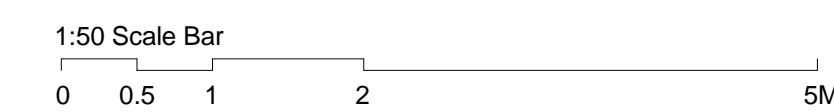
THE DESIGN IS SUBMITTED FOR APPROVAL AND THE COMPONENTS / FIXING DETAILS ARE TO BE DEVELOPED WITH THE SPECIALIST TRADE CONTRACTORS



1 SOUTH-WEST CORE FACADE BAY ELEVATION
1 : 100



2 FACADE SECTION
1 : 100



REV	DATE	BY	DESCRIPTION	CHKD
P5	12.04.17	NP	Updates for RMA Issue	IC
P4	29.03.17	TK	RMA Issue	IC
P3	03.03.17	TK	Final Draft RMA Issue	IC
P2	10.02.17	TK	Issued for draft RMA	IC
P1	06.02.17	TK	Update for draft RMA	IC

PROJECT
BRENT CROSS CRICKLEWOOD



ARCHITECT
Chapman Taylor
INTERNATIONAL ARCHITECTS MASTERPLANNERS DESIGNERS
10 Eastbourne Terrace, London, W2 6LG
Tel +44 (0)207 371 3000 | Fax +44 (0)207 371 1949
london@chapmantaylor.com

DRAWING TITLE
EAST MSCP PLOT 105 SOUTH-WEST CORE FACADE STUDIES 1
Scale 1 : 100 @ A1

PROJECT	ORIGINATOR	ZONE	LEVEL	TYPE	ROLE	NUMBER	REVISION
08069	CTA	EC	XXX	DR	A	22705	P5