

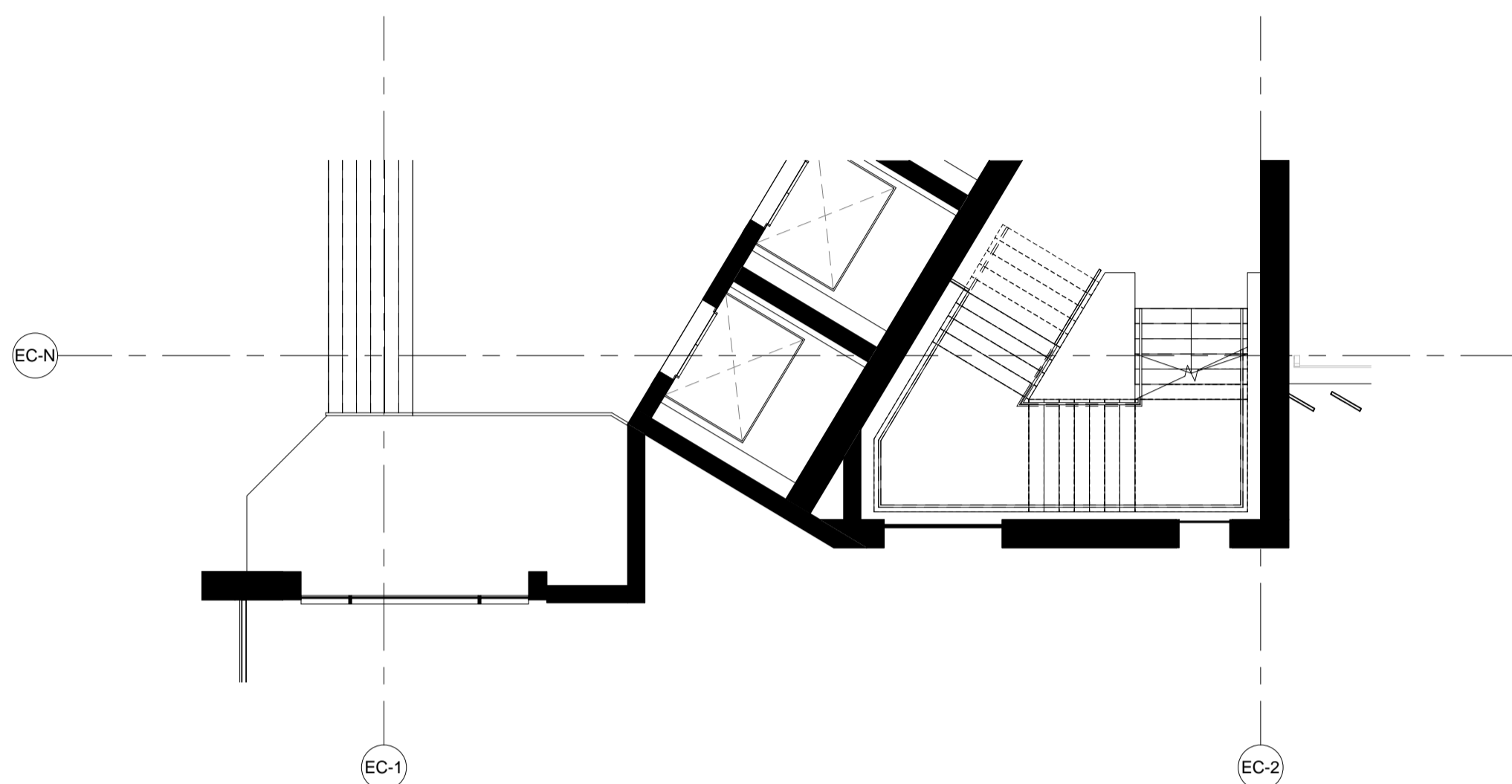
KEY PLAN

NOTES

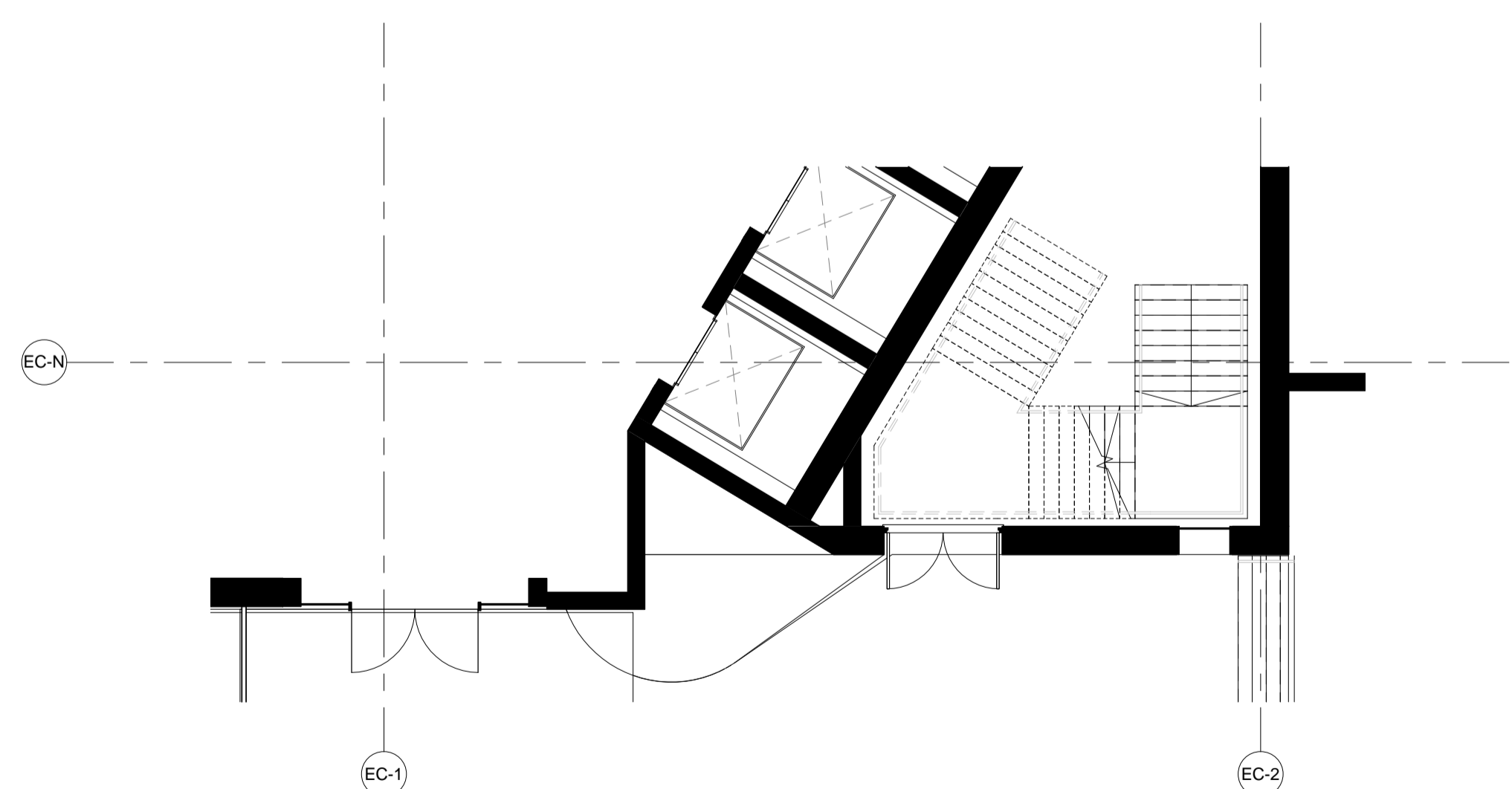
DO NOT SCALE FROM THIS DRAWING EXCEPT FOR THE PURPOSES OF TOWN PLANNING.
PLEASE SEE NOTES ATTACHED AT DRAWING NOTES Q1.

© COPYRIGHT CHAPMAN TAYLOR 2017

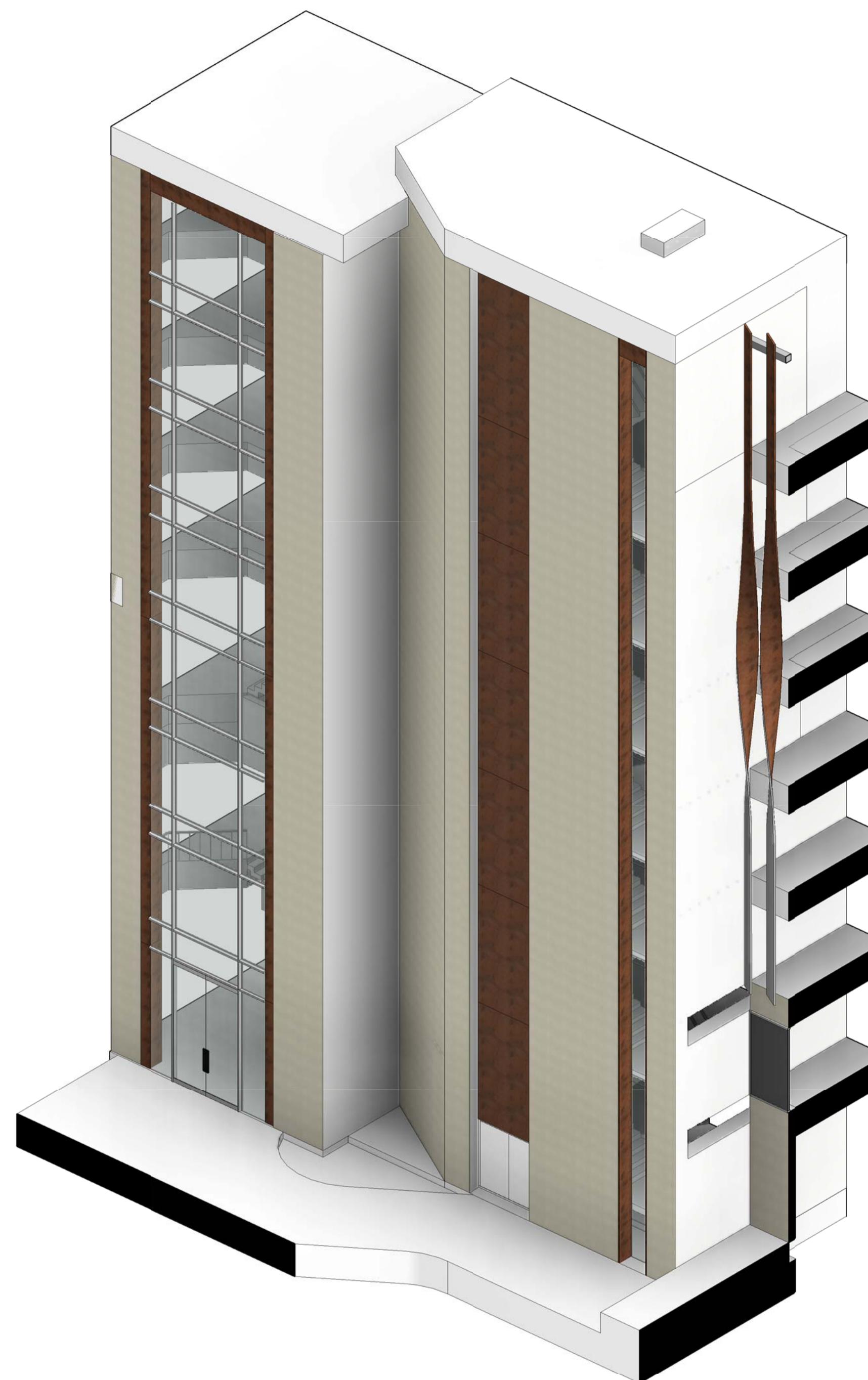
THE DESIGN IS SUBMITTED FOR APPROVAL AND THE COMPONENTS / FIXING DETAILS ARE TO BE DEVELOPED WITH THE SPECIALIST TRADE CONTRACTORS



2 LEVEL 06 - CP08
1 : 100



1 LEVEL LG - CP01
1 : 100



3 SECTIONAL 3D VIEW

REV	DATE	BY	DESCRIPTION	CHKD
P5	12.04.17	NP	Updates for RMA Issue	IC
P4	29.03.17	TK	RMA Issue	IC
P3	03.03.17	TK	Final Draft RMA Issue	IC
P2	10.02.17	TK	Issued for draft RMA	IC
P1	06.02.17	TK	Update for draft RMA	IC

PROJECT

**BRENT CROSS
CRICKLEWOOD**

CLIENT



**Standard Life
Investments**

ARCHITECT

Chapman Taylor
INTERNATIONAL ARCHITECTS MASTERPLANNERS DESIGNERS
10 Eastbourne Terrace, London, W2 6LG
Tel +44 (0)207 371 3000 | Fax +44 (0)207 371 1949
london@chapmantaylor.com

DRAWING TITLE
**EAST MSCP PLOT 105
SOUTH-WEST CORE FACADE
STUDIES 2**

Scale 1 : 100 @ A1

JOB NO	ISSUE DATE	DRAWN BY	CHECKED BY				
334/CRIC	06.02.2017	JC	IC				
PROJECT	ORIGINATOR	ZONE	LEVEL	TYPE	ROLE	NUMBER	REVISION
08069	CTA	EC	XXX	DR	A	22706	P5

