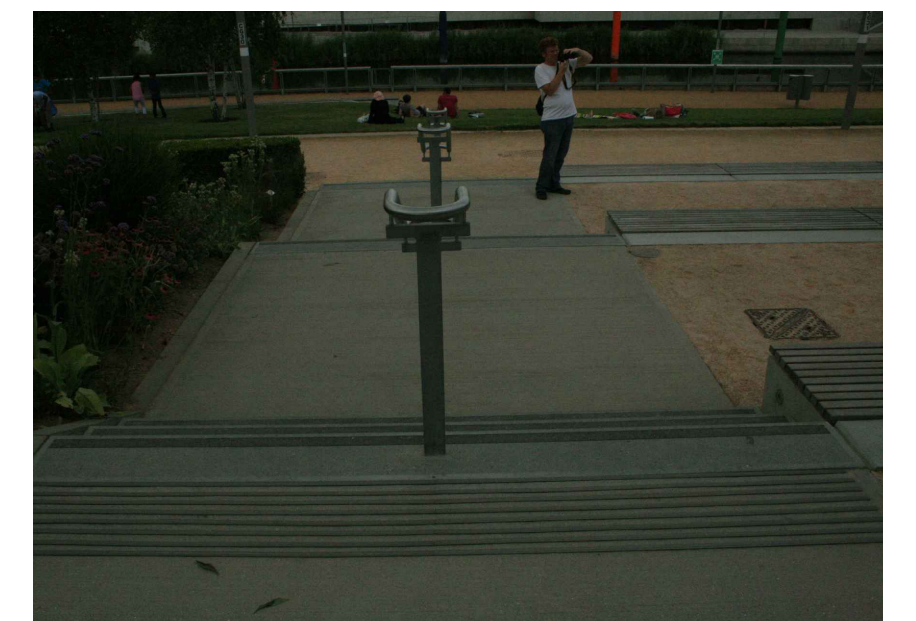
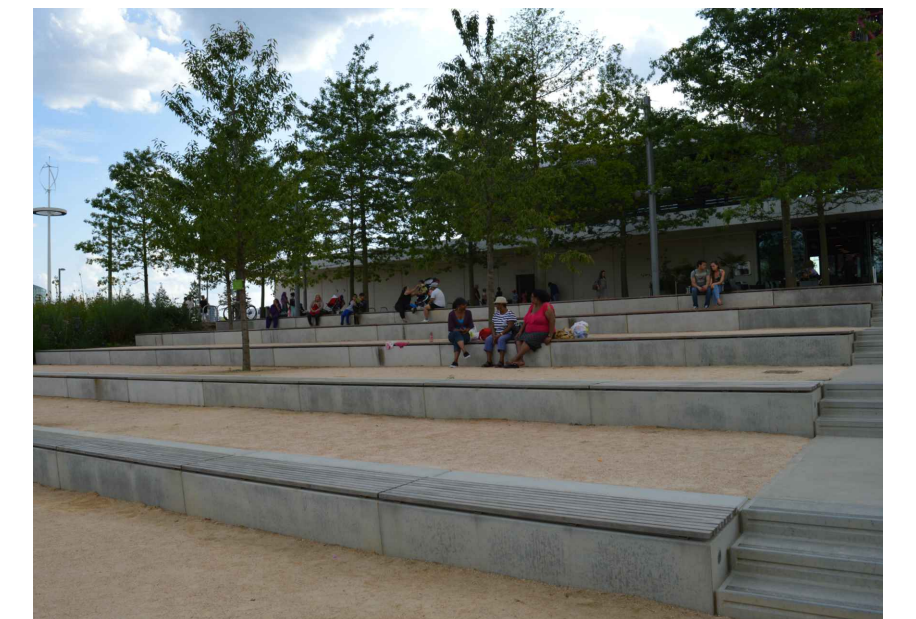
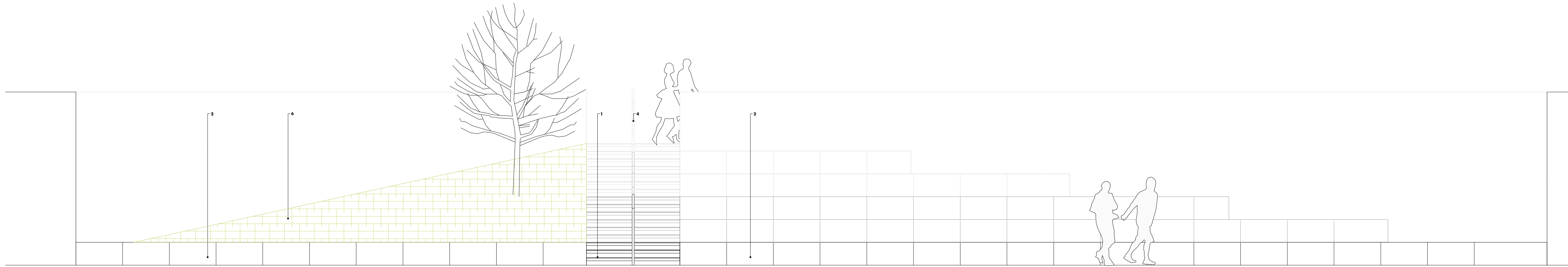


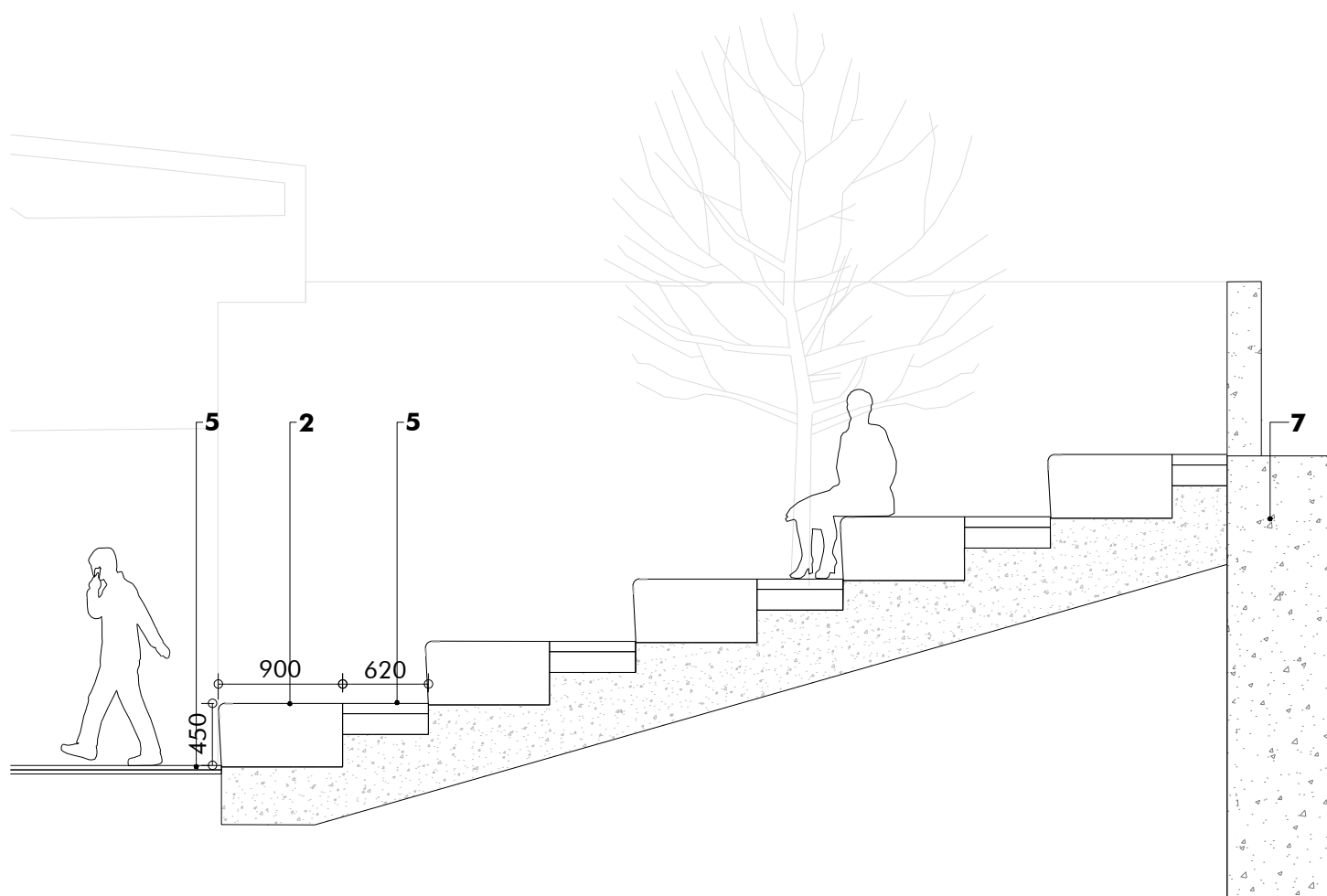
KEY

1. Pre-cast concrete single solid step units 350mm width x 150mm depth (160mm with bedding) x 1000mm lengths, with inlaid contrasting bands on the riser and treads and bull nosing to front edge as indicated.
2. Pre-cast concrete seating step units 900mm width x 450mm depth (470mm with bedding) x 1000mm lengths.
3. Corduroy paving units 400mm length x 400mm, to be laid 400mm before top and bottom of steps as indicated and to best guidance.
4. Stainless steel handrail, Ø45mm, roof fixed.
5. Surface finish, refer to Landscape General Arrangement drawings.
6. Planting. Refer to Planting Plans
7. Retaining wall.

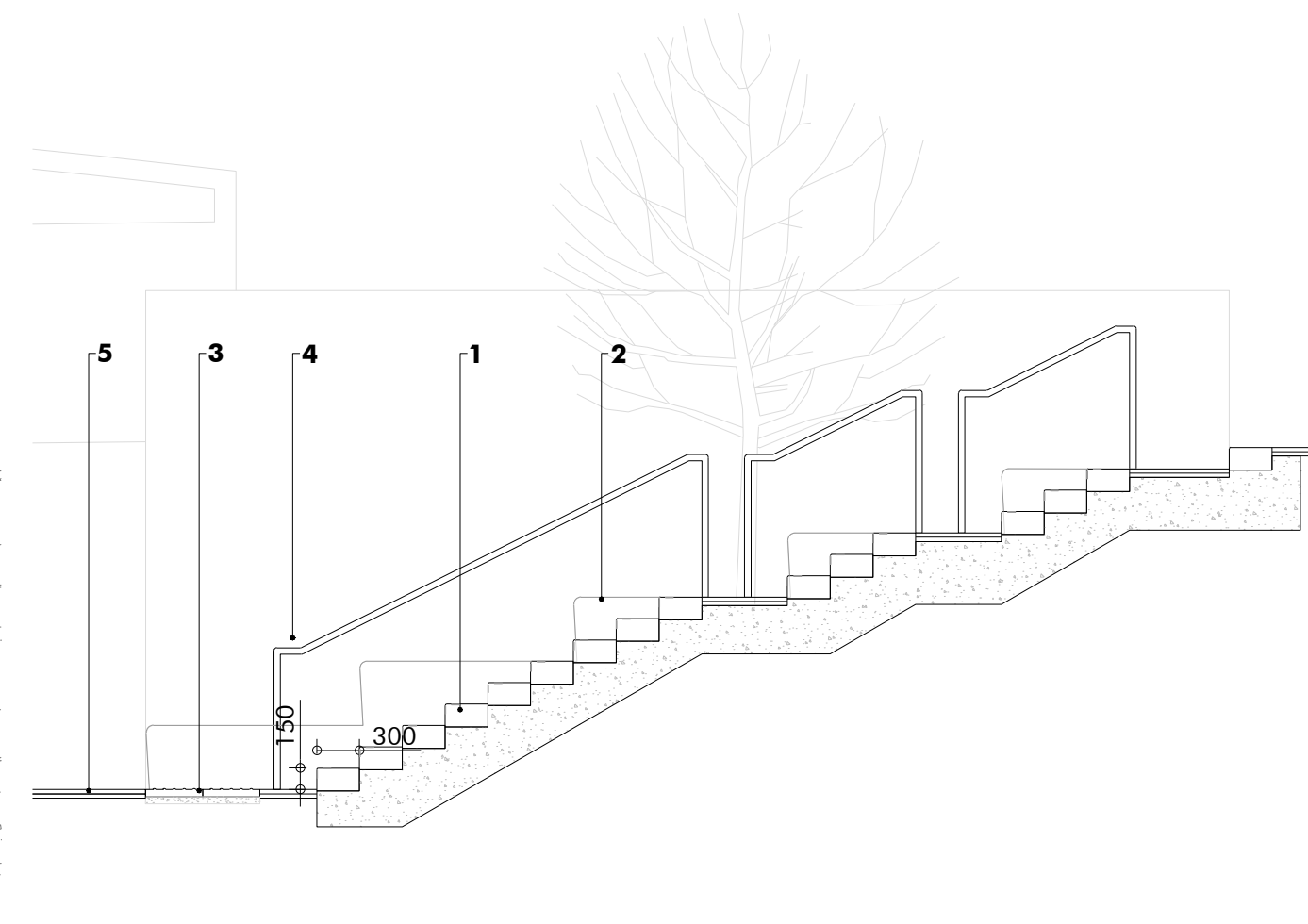
ELEVATION - View South 1:50@A1



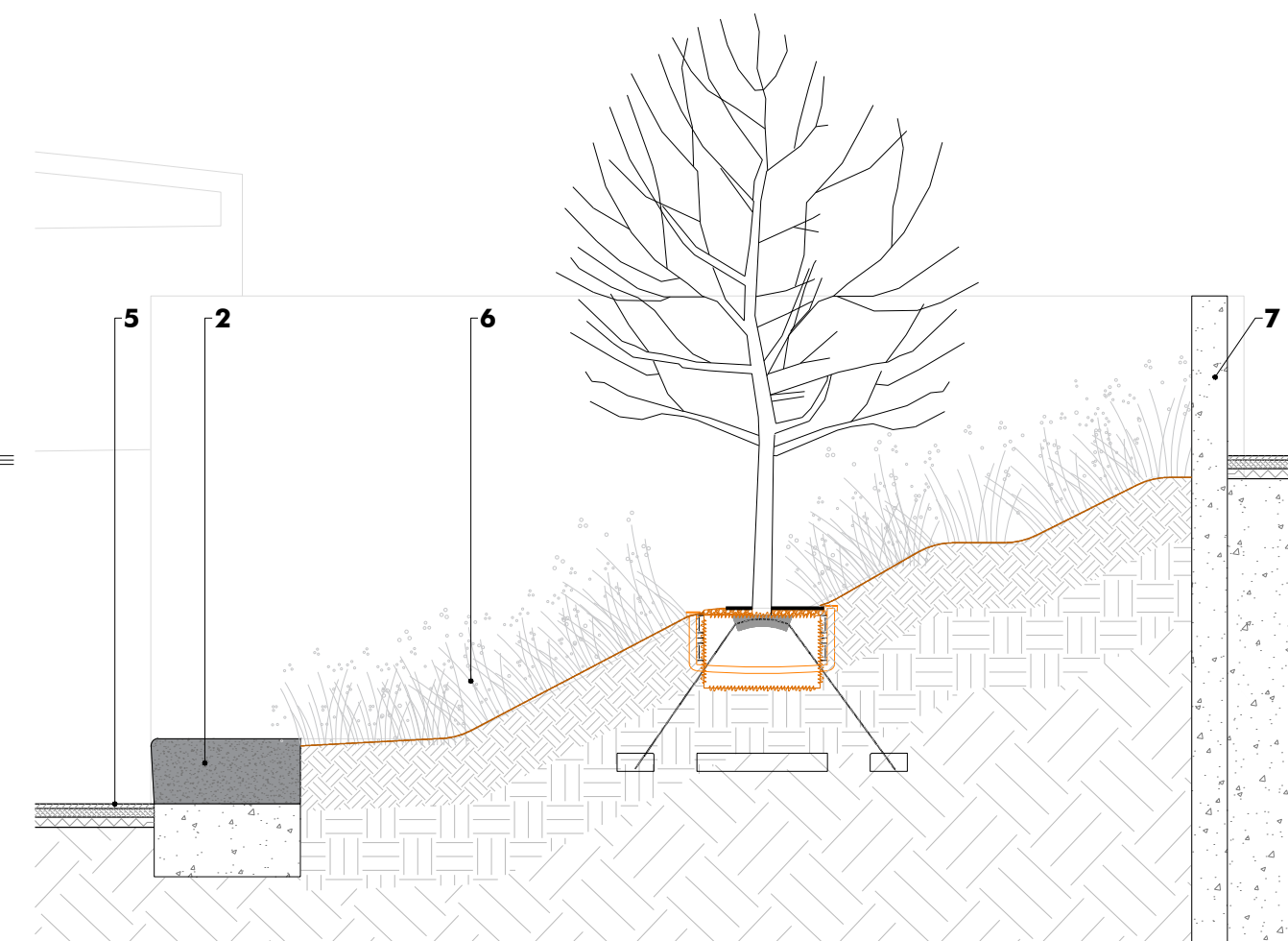
SECTION A - Terrace 1:50@A1



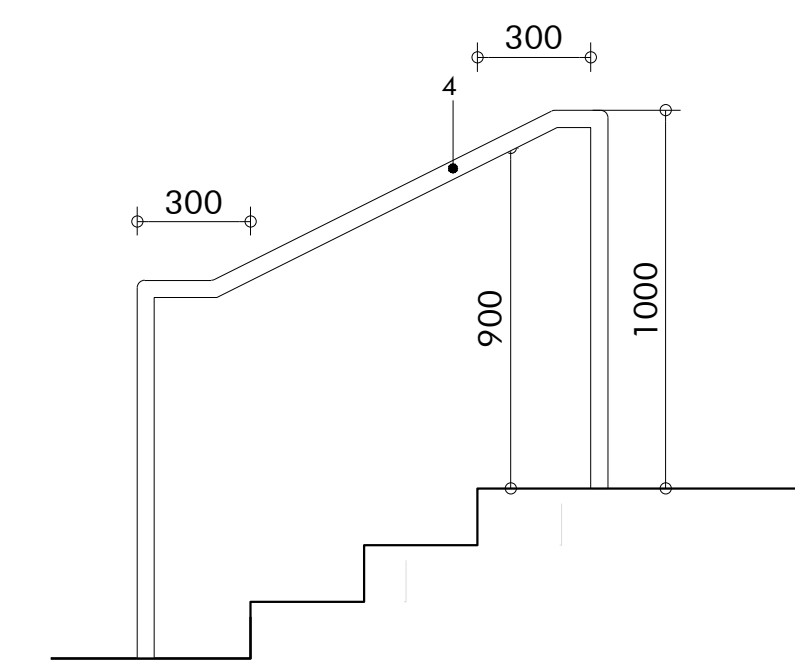
SECTION B - Steps 1:50@A1



SECTION C - Planted Terrace 1:50@A1



Handrail Detail 1:20@A1



Revision	Description	Drawn by	Checked by	Date
-	Phase 1BN RMA Submission	JR	GG	03.03.17
A	Phase 1BN RMA Submission	JR	GG	23.03.17

project	Brent Cross Cricklewood Brent Riverside Park	drawn by	JR
status	Phase 1BN RMA Submission	checked by	GG
title	Typical Terrace Reach 3 - South Bank	date	02.03.17
Xref	-	scale	Varies@A1
drawing No	1065-03-462	revision	A