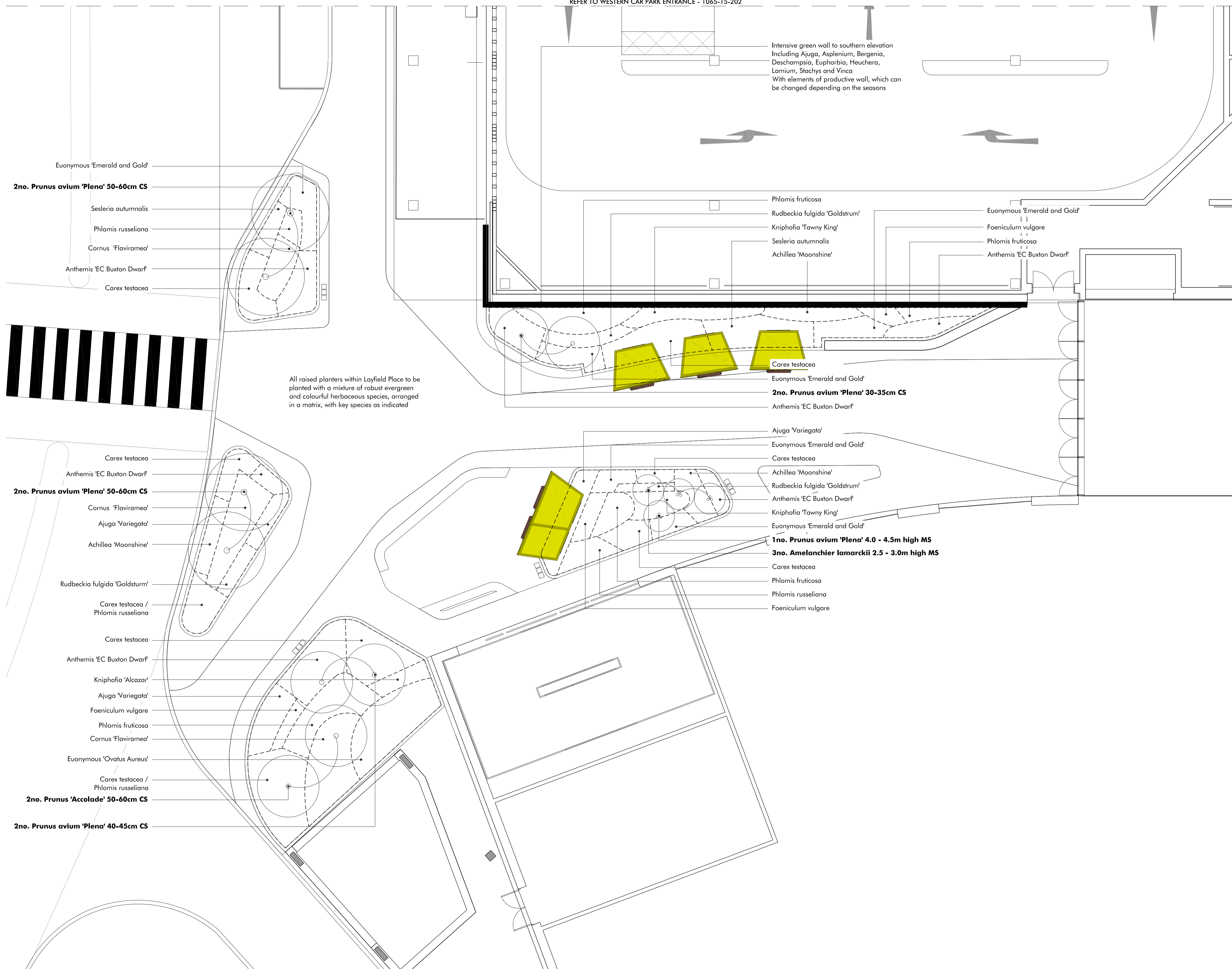
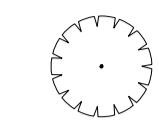
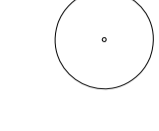

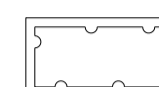




REFER TO WESTERN CAR PARK ENTRANCE - 1065-15-202



KEY

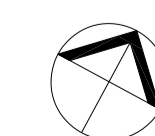
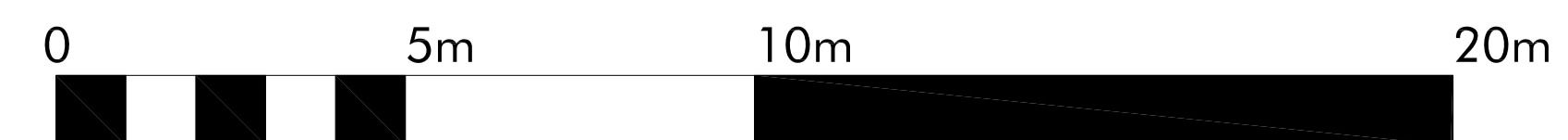
-  **RETAINED TREES**
-  **PROPOSED TREE PLANTING**
-  **PROPOSED ORNAMENTAL SHRUB PLANTING**
Shrubs and ornamental grasses - 5L pots @ 5-7no./m²
Herbaceous planting - 2L pots @ 7-9no./m²
-  **PROPOSED HEDGE PLANTING**
Pre-formed semi-mature instant hedging
0.5m x 0.5m width x 1.2-1.5m height
-  **PROPOSED CLIMBERS**
10L specimen self-clinging climbers
-  **PROPOSED METAL MESH FRAME FOR CLIMBERS**

To be read in conjunction with Macgregor Smith Base & Soft Landscape Specifications

REFER TO WESTERN HOTEL - 1065-15-204

Revision	Description	Drawn by	Checked by	Date
-	Draft Phase 1BN RMA Submission	SP	JP	06.03.17
A	Phase 1BN RMA Submission	SP	GG/RG	23.03.17

Macgregor • Smith Landscape Architecture			
project	Brent Cross Cricklewood	drawn by	SP
status	Phase 1BN RMA Submission	checked by	JP
title	Layfield Place Threshold Planting Plan	date	06.03.17
Xref	xref	scale	1:100@a1
drawing No	1065-15-203	revision	A



This drawing is protected by copyright. Contractors must check all dimensions on site. Only figure dimensions are to be worked from. Discrepancies must be reported to architect before proceeding. Christopher House, 11-12 High Street, Boff, BA1 5AG. Tel: 01225 464 690 Fax: 01225 429 962 enquiries@macgregorsmith.co.uk

PLEASE SEE NOTES ATTACHED AT DRAWING NOTES Q1