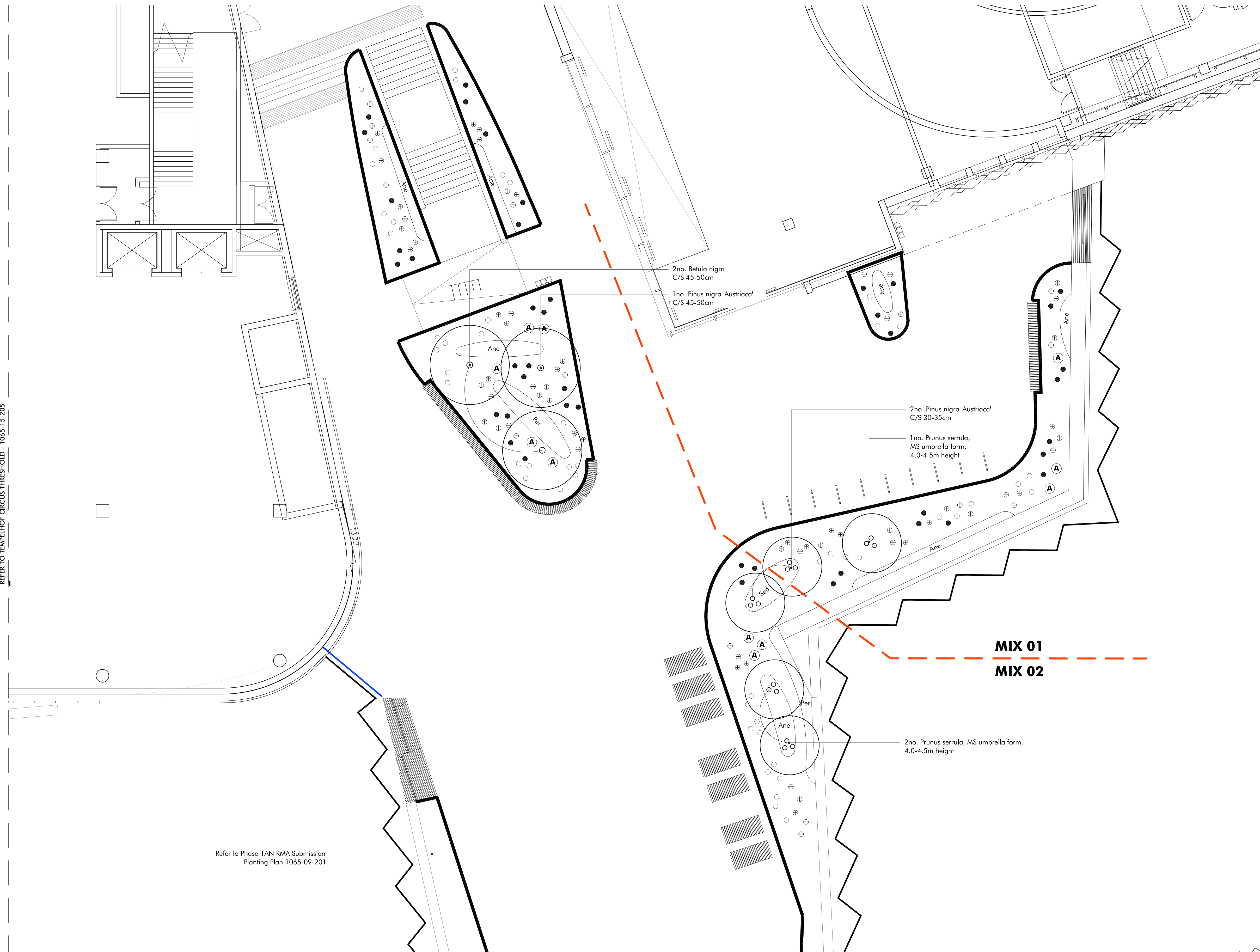


REFER TO TEMPELHOF CIRCUS THRESHOLD - 1065-15-205

REFER TO FENWICK PLACE THRESHOLD - 1065-15-207



Refer to Phase 1AN RMA Submission
Planting Plan 1065-09-201

MIX 01

Matrix planting

Anemanthele lessoniana	(5L)	7/m ²	30%
Liriope muscari 'Big Blue'	(5L)	7/m ²	30%
Polystichum polyblepharum	(5L)	7/m ²	40%

Feature planting

(A) Acanthus spinosus	(2L)	1no. per dot
Ane Anemone 'Honorine Jobert'	(2L)	9/m ²
● Blechnum spicant	(5L)	1no. per dot
○ Dicentra spectabilis 'Alba'	(2L)	3no. per dot
Sed Sedum 'Purple Emperor'	(2L)	9/m ²
⊕ Helleborus niger	(2L)	3no. per dot

Swathes of Muscari hyacinthoides and Galanthus nivalis bulbs planted towards front of planters

MIX 02

Matrix planting

Deschampsia cespitosa 'Goldtau'	(5L)	7/m ²	30%
Liriope muscari 'Big Blue'	(5L)	7/m ²	40%
Anemanthele lessoniana	(5L)	7/m ²	30%

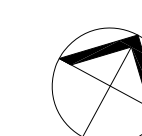
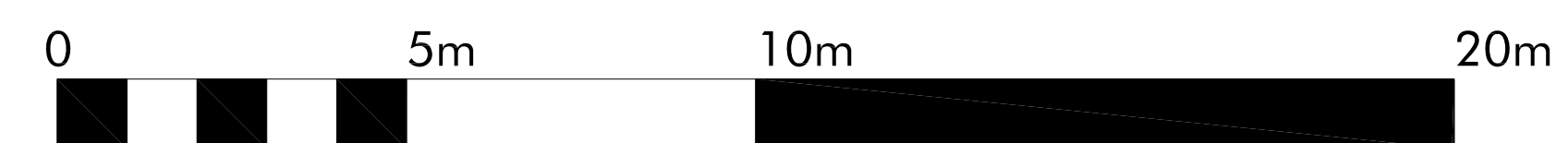
Feature planting

(A) Acanthus spinosus	(2L)	1no. per dot
Ane Anemone 'Honorine Jobert'	(2L)	9/m ²
● Blechnum spicant	(5L)	1no. per dot
○ Dicentra spectabilis 'Alba'	(2L)	3no. per dot
Per Persicaria 'Darjeeling Red'	(2L)	9/m ²
⊕ Penstemon 'Raven'	(2L)	3no. per dot

Swathes of Muscari hyacinthoides and Galanthus nivalis bulbs planted towards front of planters

MIX 01
MIX 02

Revision	Description	Drawn by	Checked by	Date
-	Draft Phase 1BN RMA Submission	SP	GG	06.03.17
A	Phase 1BN RMA Submission	SP	GG	24.03.17



PLEASE SEE NOTES ATTACHED AT DRAWING NOTES Q1

Macgregor • Smith
Landscape Architecture

project	Brent Cross Cricklewood	drawn by	SP
status	Phase 1BN RMA Submission	checked by	GG
title	Living Bridge Approach North Planting Plan	date	06.03.17
Xref	08069-CRL-SW-UGO-DR-A-11002	scale	1:100@a1
drawing No	1065-15-206	revision	A