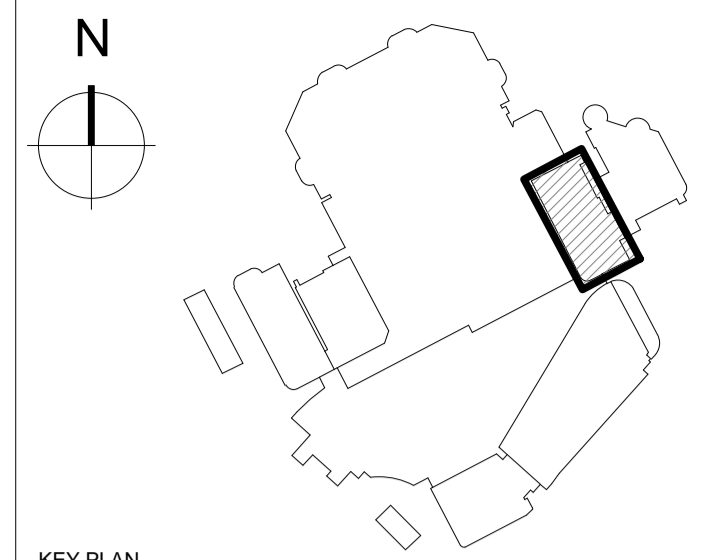


1 SECTIONAL 3D VIEW OF WEST FACADE



KEY PLAN

NOTES

DO NOT SCALE FROM THIS DRAWING EXCEPT FOR THE PURPOSES OF TOWN PLANNING.  
PLEASE SEE NOTES ATTACHED AT DRAWING NOTES Q1.

© COPYRIGHT CHAPMAN TAYLOR 2017

THE DESIGN IS SUBMITTED FOR APPROVAL AND THE COMPONENTS / FIXING DETAILS ARE TO BE DEVELOPED WITH THE SPECIALIST TRADE CONTRACTORS

P4	12.04.17	NP	Updates for RMA Issue	IC
P3	29.03.17	TK	RMA Issue	IC
P2	03.03.17	TK	Final Draft RMA Issue	IC
P1	10.02.17	TK	Issued for draft RMA	IC

REV	DATE	BY	DESCRIPTION	CHKD
-----	------	----	-------------	------

PROJECT  
**BRENT CROSS  
CRICKLEWOOD**



ARCHITECT  
**Chapman Taylor**  
INTERNATIONAL ARCHITECTS MASTERPLANNERS DESIGNERS  
10 Eastbourne Terrace, London, W2 6LG  
Tel +44 (0)207 371 3000 | Fax +44 (0)207 371 1949  
london@chapmantaylor.com

DRAWING TITLE  
**FENWICK FACADE OVERCLAD  
FACADE DETAIL STUDY PLANS AND  
3D VIEW OF WEST FACADE**

Scale @ A1

JOB NO	ISSUE DATE	DRAWN BY	CHECKED BY				
334/CRIC	10.02.2017	JC	IC				
PROJECT	ORIGINATOR	ZONE	LEVEL	TYPE	ROLE	NUMBER	REVISION
08069	CTA	FN	XXX	DR	A	22603	P4

