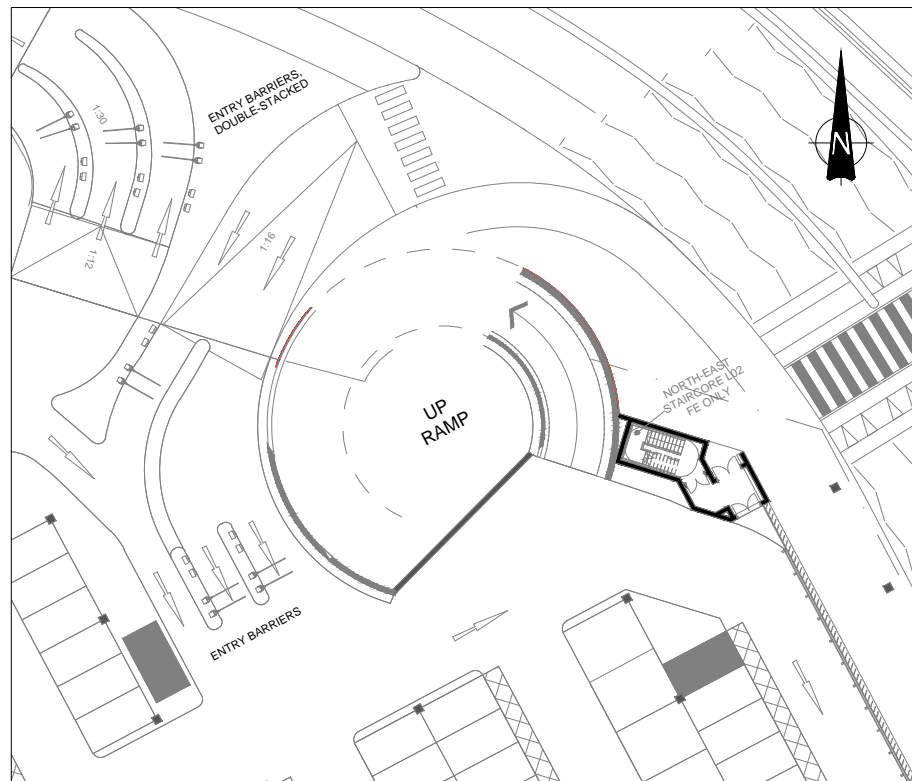
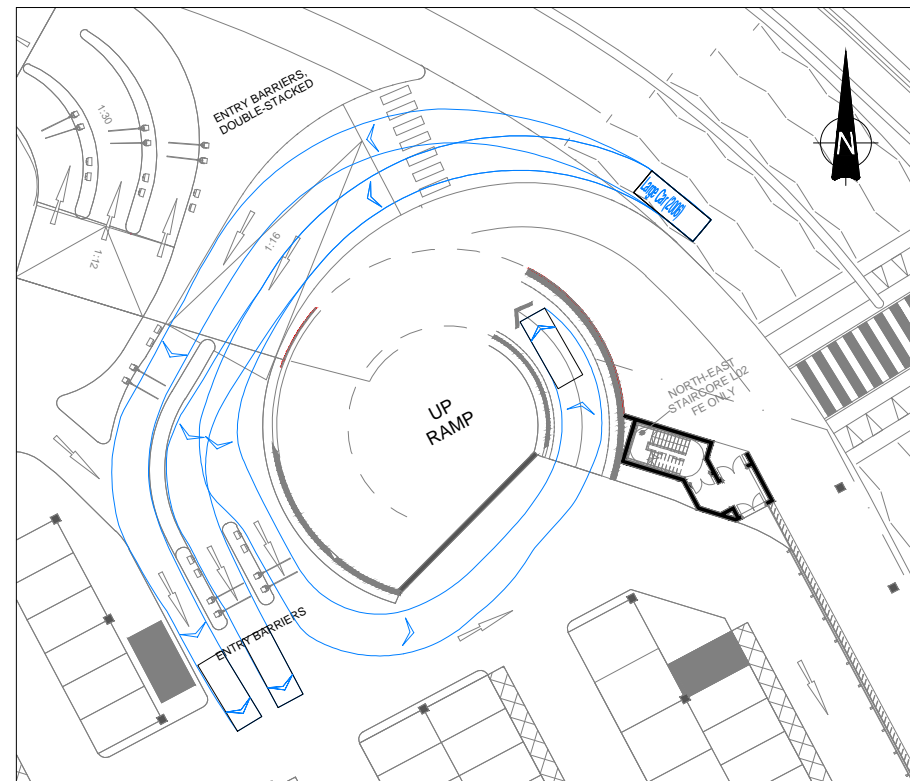


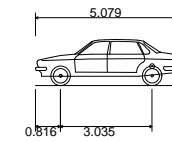
This drawing should not be scaled. Dimensions to be verified on site. Any discrepancies should be referred to the Engineer prior to work being put in hand. This drawing is the property of Waterman Structures Limited and is issued on the condition that it is not copied, reproduced, retained or disclosed to any unauthorised person, either wholly or in part without the consent in writing of Waterman Structures Limited Pickfords Wharf Clink Street London SE1 9DG United Kingdom t +44 20 7928 7888



ENTRY ARRANGEMENT

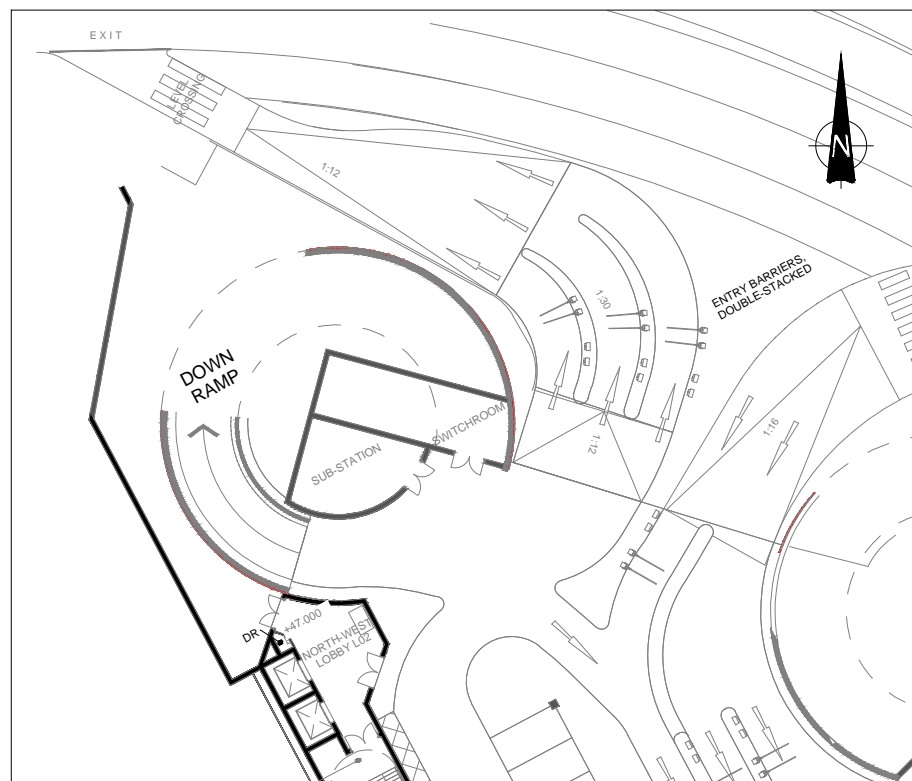


ENTRY SWEEP PATH ANALYSIS

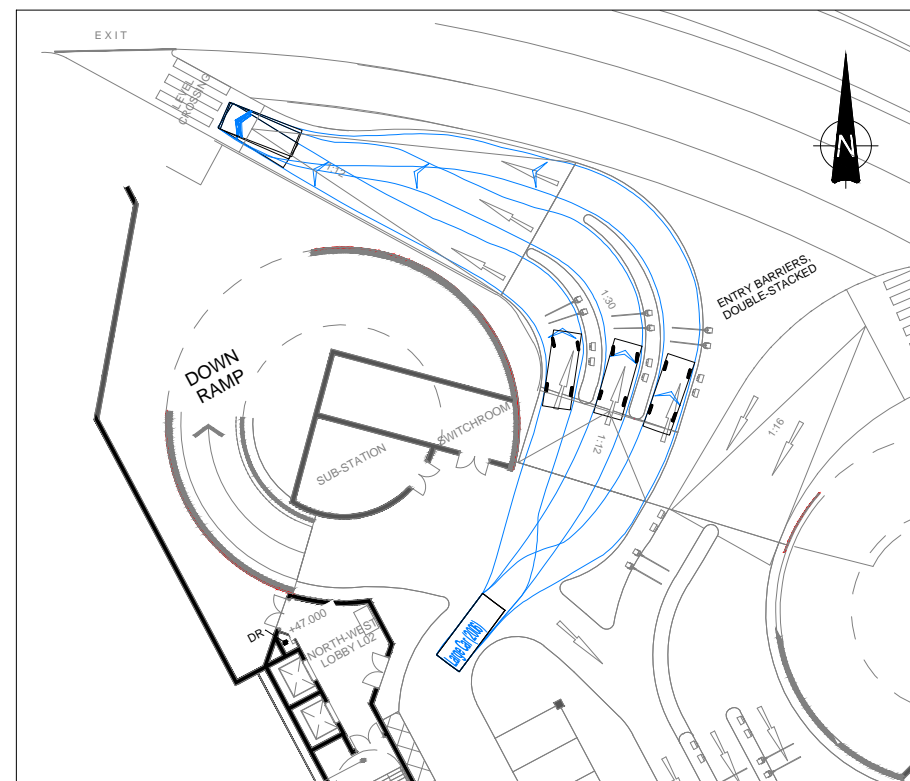


Large Car (2006)
 Overall Length 5.079m
 Overall Width 1.872m
 Overall Body Height 1.525m
 Min Body Ground Clearance 0.310m
 Max Track Width 1.831m
 Lock to lock time 4.00s
 Kerb to Kerb Turning Radius 5.900m

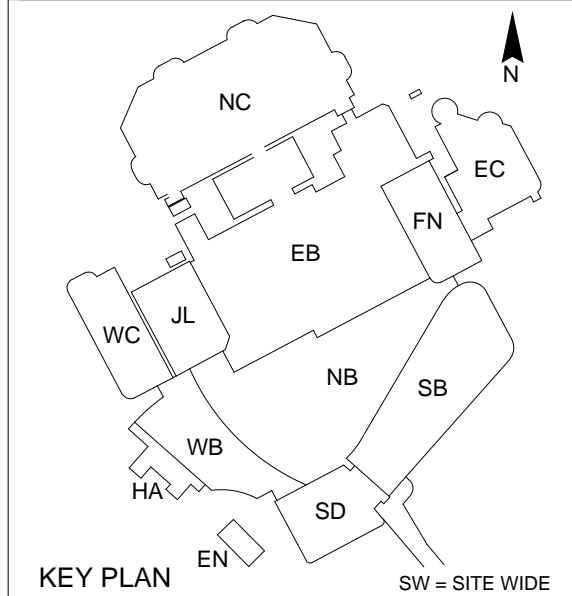
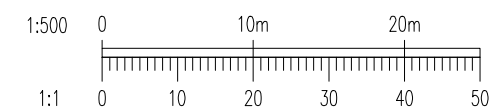
VEHICLE DETAILS



EXIT BARRIER ARRANGEMENT



EXIT SWEEP PATH ANALYSIS



Rev	Date	Description	By
P4	27.04.17	ARCHITECT'S LAYOUT UPDATED	LS
P3	26.04.17	ARCHITECT'S LAYOUT UPDATED	LS
P2	31.03.17	ISSUED FOR PLANNING	LS
P1	17.03.17	DRAWING RENAMED TO BX CONVENTION	LS

Amendments
 Project **BRENT CROSS**

Title **SUGGESTED KERB REALIGNMENT AT EAST CAR PARK ENTRY AND EXIT**

Client

PLANNING

Designed By	-	Checked By	RAS	Waterman Project Number	CIV15997
Drawn By	LS	Date	JANUARY 2017	Project Code	08069
Scales @ A1		1:500			

Originator	Volume (Zone)	Level	Type	Role	Number	Revision
WIE-SW-00_0-DR-C-05002					P4	